

VISION

Port Campbell will be a **world class** destination at the heart of the Shipwreck Coast, where both day and longer term visitors will enjoy exploring the unique character of this beautiful coastal town. The town centre re-visioning project is an important component of the *Shipwreck Coast Master Plan*. The project focuses on the 'public' areas of the town centre. The draft concept plan seeks to:

- Improve the appearance and amenity of the town;
- Prioritise pedestrian movement and improve connections to the future 12 Apostles Trail and National Park;
- Improve vehicle circulation and parking arrangements; and
- Ensure the town centre functions well into the future, meeting the requirements of the local community and visitors.

We now invite you to participate in responding to the draft concept design that seeks to implement this vision.

WHAT IS THE DRAFT DESIGN FOR?

Corangamite Shire has prepared a draft concept design to identify the main design initiatives, and to provide a basis for seeking feedback from the community and stakeholders prior to preparing a final concept design.

AT WHAT STAGE IS THE PROJECT?

The project is at the initial draft concept stage. The design has been informed by the outcomes of earlier stakeholder and community engagement in October 2017. After reviewing your feedback we will finalise the concept design, and prepare detailed design drawings. We aim to prepare drawings for tender by mid-2018.

EXTENT OF THE PROJECT

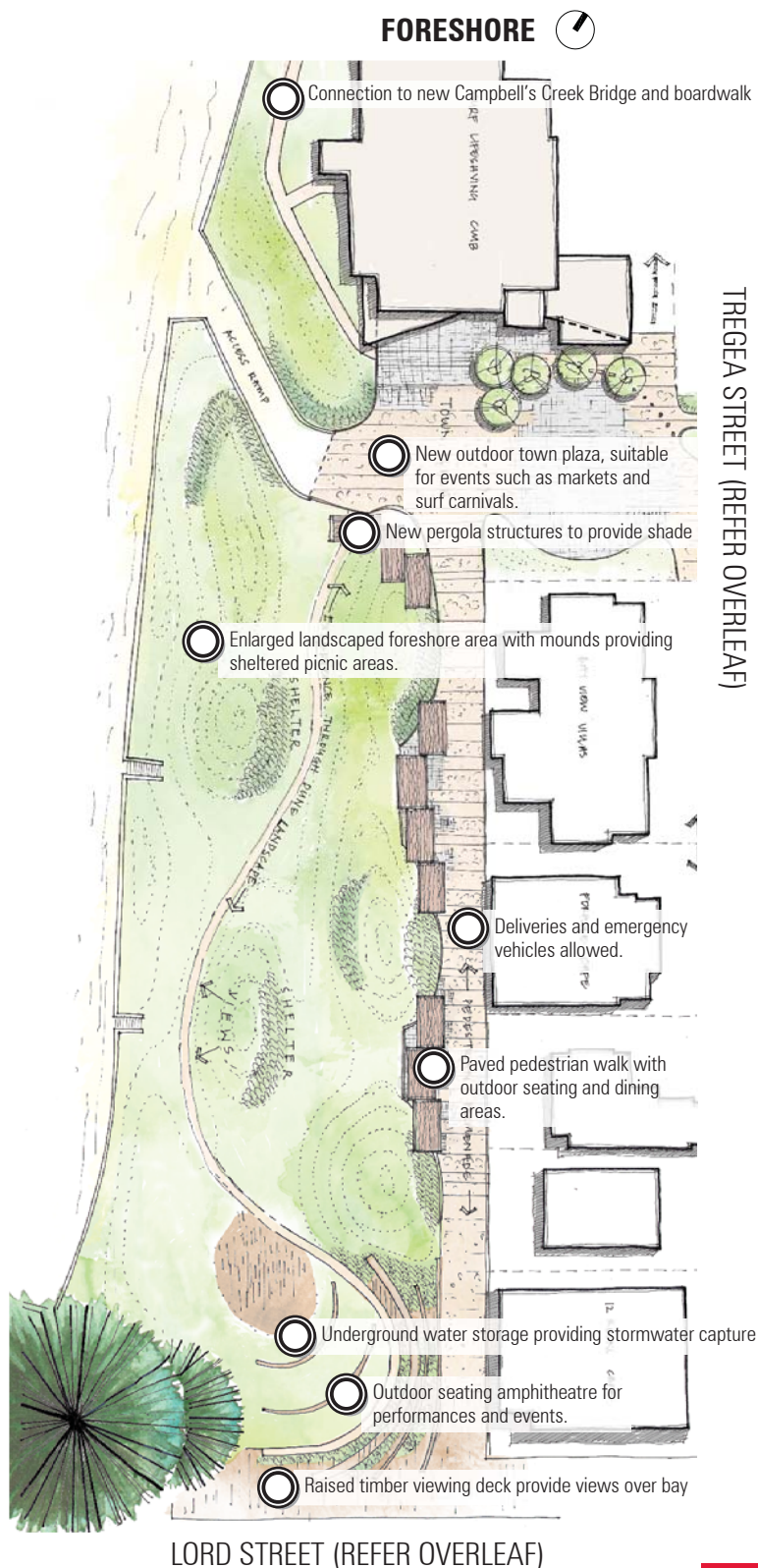
The project is predominantly confined to Lord Street, Cairns Street, the foreshore and Tregea Street. It includes some additional initiatives around the periphery of the township such as walking and bicycle paths, town 'gateways' and additional car parking areas.

WHERE TO SEE AND COMMENT ON THE PROJECT

This leaflet shows a small extract from the project. We invite you to visit our displays at Port Campbell to view larger presentation panels of the project. The displays are located at:

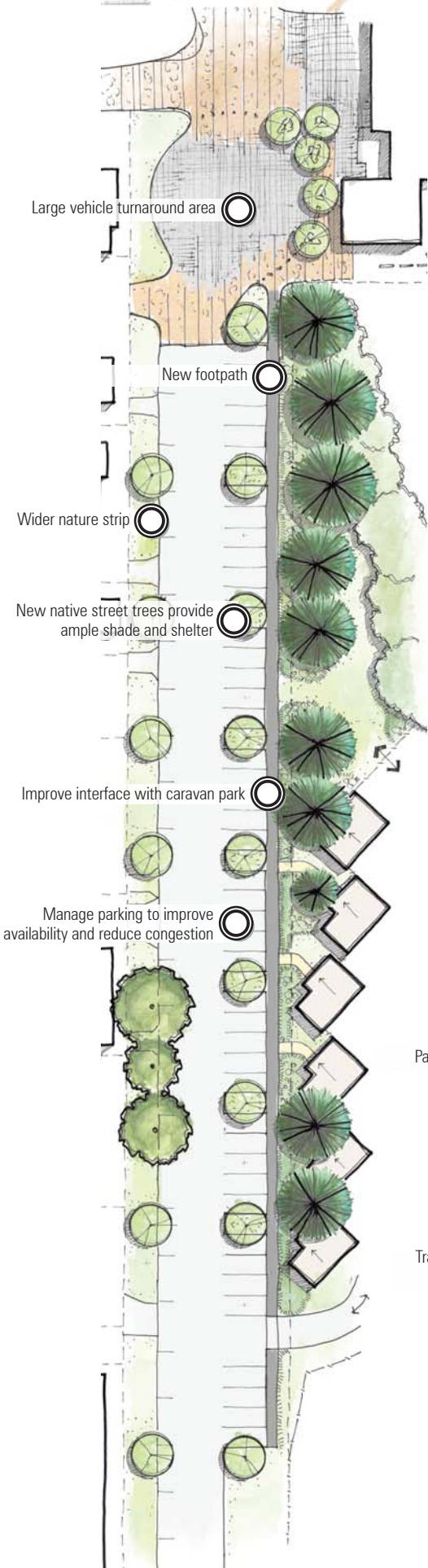
- The Port Campbell Visitor Information Centre (23 Morris Street)
- Port Campbell Parks Victoria Office (Corner Morris and Lord Streets)
- The Port Campbell General Store (23 Lord Street)
- Corangamite Shire Council Civic Centre (181 Manifold Street Camperdown)
- Online at www.corangamite.vic.gov.au

These better explain the design initiatives and ideas. We also invite you to complete the feedback form, located either online at: www.corangamite.vic.gov.au/Public-Notices-Consultation/Port-Campbell-Town-Centre-Project or attached to this flyer. The feedback form must be completed and returned (freepost) or placed in the feedback boxes next to the display boards by **Monday 12th February 2018**.

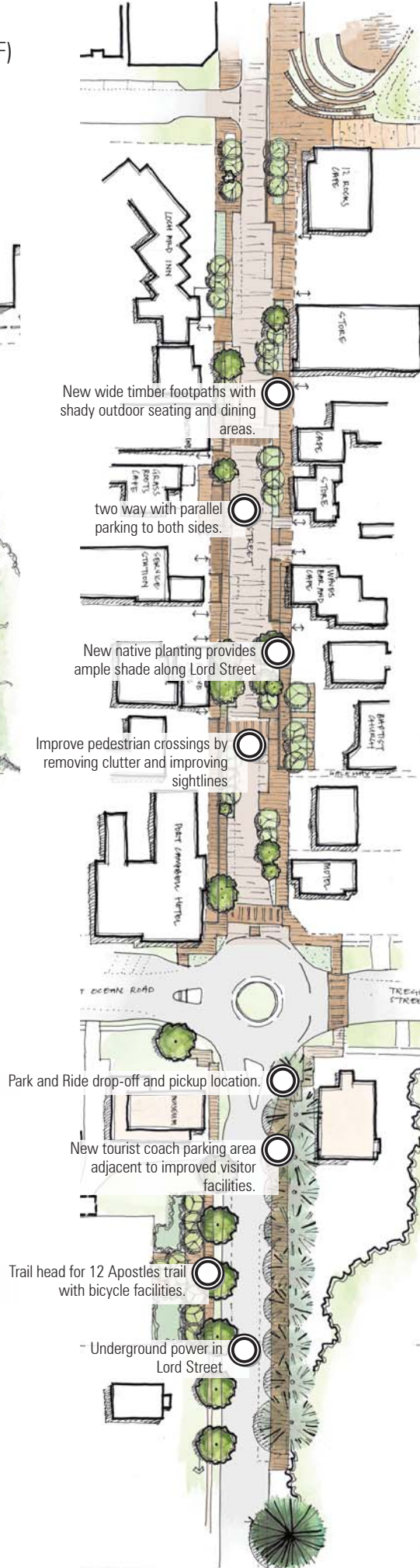


TREGEA STREET

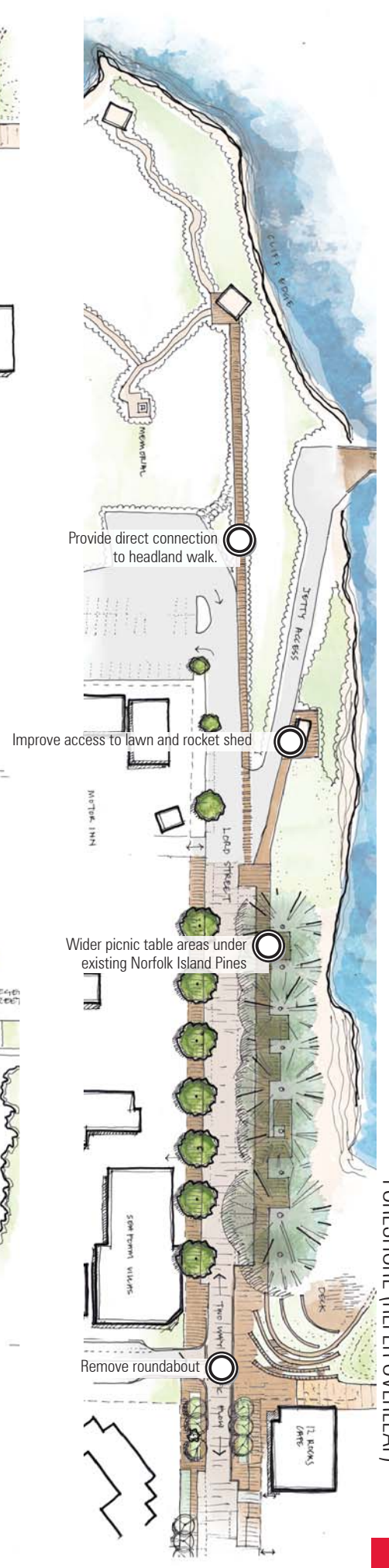
FORESHORE (REFER OVERLEAF)



LORD STREET (NORTH)



LORD STREET (SOUTH)



FORESHORE (REFER OVERLEAF)

FEEDBACK FORM

We are keen to hear your thoughts about the range of design initiatives.

The following feedback includes key elements as illustrated in the design flyer and on the design panels. We encourage you to provide some written comments in the additional space on the reverse side of this form. Please do not hesitate to email portcampbelltowncentreproject@corangamite.vic.gov.au if you have any questions or wish to provide more detailed feedback.

About you: Local Resident International visitor
 Australian visitor Your home postcode if Australian _____

Age range: 0-14 25-39 55-69 85+ **Gender:** Male
 15-24 40-54 70-84 Female

AGREE	DISAGREE	DON'T KNOW	HIGH PRIORITY
-------	----------	------------	---------------

PROPOSED DESIGN INITIATIVES	AGREE	DISAGREE	DON'T KNOW	HIGH PRIORITY
Overall Vision				
Create a pedestrian friendly world class main street				
Create a pedestrian friendly world class foreshore area				
Retain and increase where possible the number of parking spaces around town				
Use parking management strategies (eg timed parking) to improve parking availability				
Lord Street				
New wide timber footpaths with shady outdoor seating and dining areas				
Pedestrian friendly Lord Street – two way with parallel parking to both sides				
New tourist coach parking area adjacent to improved visitor facilities				
Park and Ride drop-off and pickup location				
New native planting provides ample shade along Lord Street				
Wider picnic table areas under existing Norfolk Island Pines				
Provide direct connection to headland walk				
Improve pedestrian crossings by removing clutter and improving sightlines				
Underground power in Lord Street				
Remove roundabout				
Cairns Street and Foreshore				
Paved pedestrian walk with outdoor seating and dining areas				
Enlarged landscaped foreshore area with mounds providing sheltered picnic areas				
New pergola structures provide shade to outdoor areas				
Deliveries and emergency vehicles allowed				
Outdoor seating amphitheatre for performances and events				
Raised timber viewing deck to provide views over bay				
New outdoor town plaza – suitable for events such as markets and surf carnivals				
Connection to new Campbell Creek Bridge and boardwalk				
Tregea Street				
New footpath to west side of Tregea Street				
Wider nature strip to east side of Tregea Street				
Large vehicle turnaround area at south end of Tregea Street				
New native street trees to provide ample shade and shelter				
Other areas				
New town loop walk				
Replace existing old Great Ocean Road with new walking path and revegetated area				
Provide new access to headland car park				
Close east end of Cairns Street to through traffic				
Provide long term parking area at east end of Cairns Street				
Provide dedicated parking for caravans and campervans				



FURTHER COMMENTS

If you have any further comments, please add them below:

Overall Response:

Lord Street:

Foreshore:

Tregea Street:

Other areas:

Should you wish to be kept informed about future stages of the project please provide your name and email address below:

Delivery Address:
PO Box 84
CAMPERDOWN VIC 3260

FOLD DIAGRAM
Once completed fold questionnaire
as diagram shows:



first fold



second fold



tape here
to secure

No stamp required
if posted in Australia



Port Campbell Town Centre Project
Corangamite Shire
Reply Paid 84
CAMPERDOWN VIC 3260