

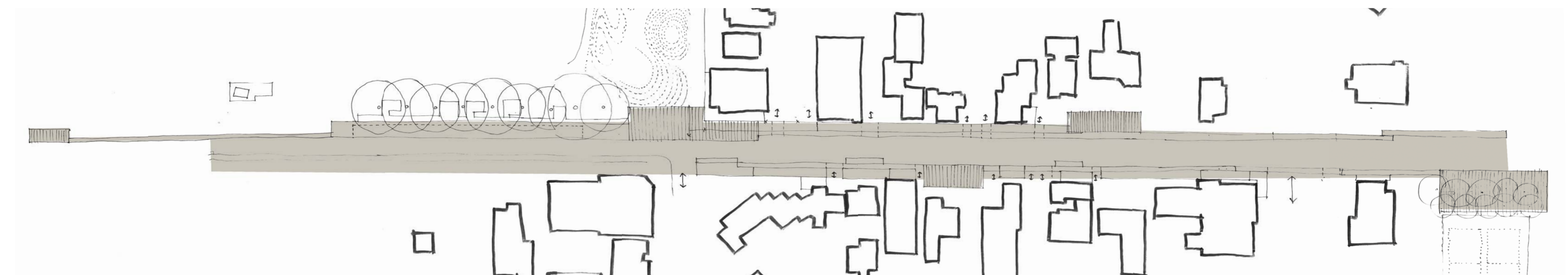
LORD STREET



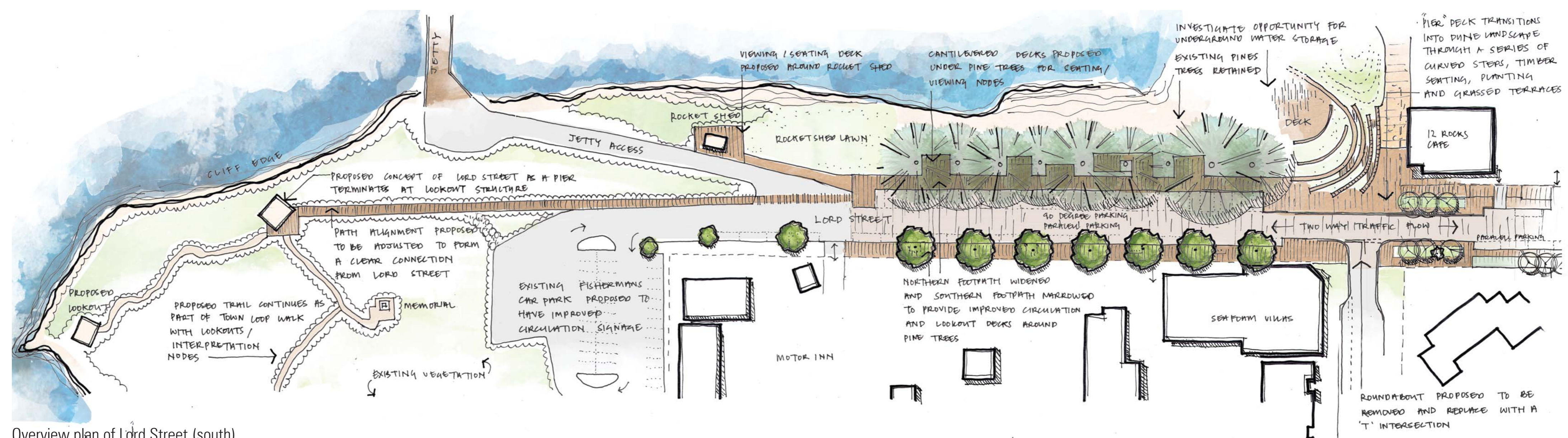
View of Port Campbell from western head (1920-1954)

LORD STREET PIER CONCEPT:

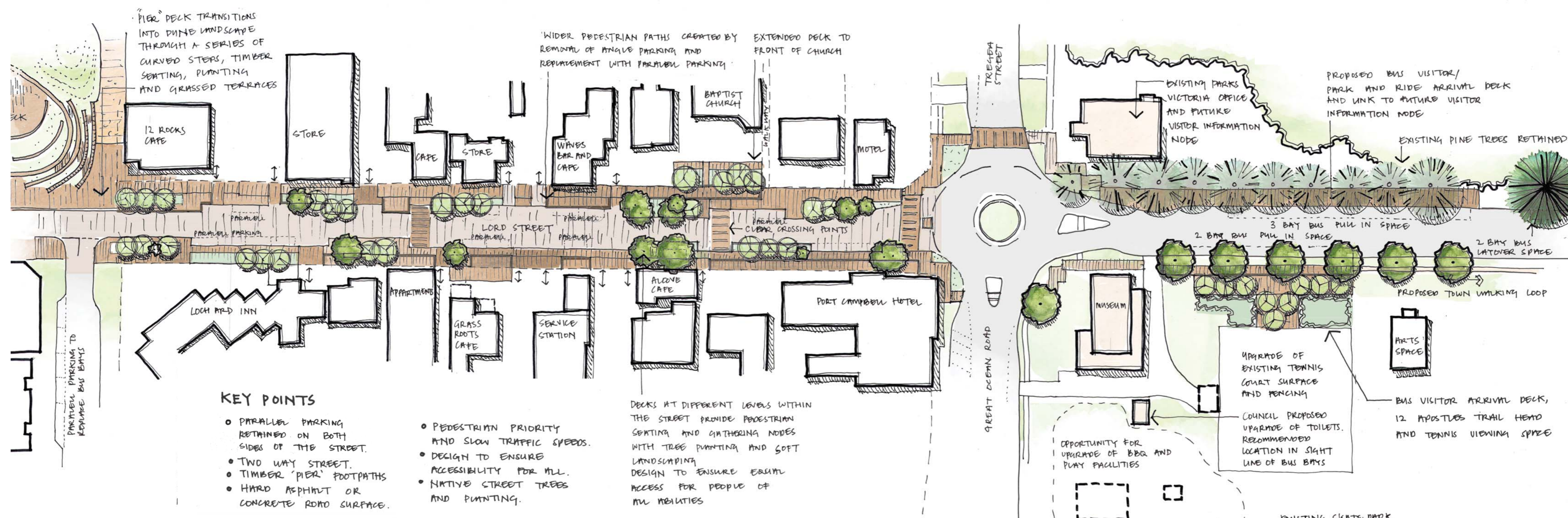
PROPOSED CONCEPT OF LORD STREET AS A PIER, FORMING A CONTINUOUS PEDESTRIAN PRIORITY CONNECTION FROM THE PUBLIC PURPOSE RESERVE TO THE HEADLAND. TO TIE TOGETHER THE MAIN COMMERCIAL AREA AND PROVIDE A VISITOR EXPERIENCE WHICH ENCOURAGES EXPLORATION OF THE HEADLAND AND PORT CAMPBELL SURROUNDS.



Landscape response
Drawing 1



Overview plan of Lord Street (south)
Drawing 2



KEY POINTS

- PARALLEL PARKING RETAINED ON BOTH SIDES OF THE STREET.
- TWO WAY STREET.
- TIMBER "PIER" FOOTPATHS
- HARD ASPHALT OR CONCRETE ROAD SURFACE.
- PEDESTRIAN PRIORITY AND SLOW TRAFFIC SPEEDS.
- DESIGN TO ENSURE ACCESSIBILITY FOR ALL.
- NATIVE STREET TREES AND PLANTING.

DECKS AT DIFFERENT LEVELS WITHIN THE STREET PROVIDE PEDESTRIAN SEATING AND GATHERING NODES WITH TREE PLANTING AND SOFT LANDSCAPING. DESIGN TO ENSURE EQUAL ACCESS FOR PEOPLE OF ALL ABILITIES

Overview plan of Lord Street (north)
Drawing 3