

LORD STREET



RAISED DECK
PEDESTRIAN FOOTPATH
AND SEATING /
GATHERING NODES WITH
TREE PLANTING

TWO WAY ROAD

PEDESTRIAN FOOTPATH
AND SEATING / GATHERING
NODES WITH TREE PLANTING

STORE AND
CAFE



RAISED DECK
PEDESTRIAN FOOTPATH
AND SEATING /
GATHERING NODES

TWO WAY ROAD

RAISED DECK SEATING /
GATHERING NODES AND
PEDESTRIAN FOOTPATH

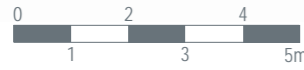
DECK EXTENDING INTO
BAPTIST CHURCH FRONT GARDEN

OPTION FOR
SHADE STRUCTURES

BAPTIST CHURCH
FRONT LAWN

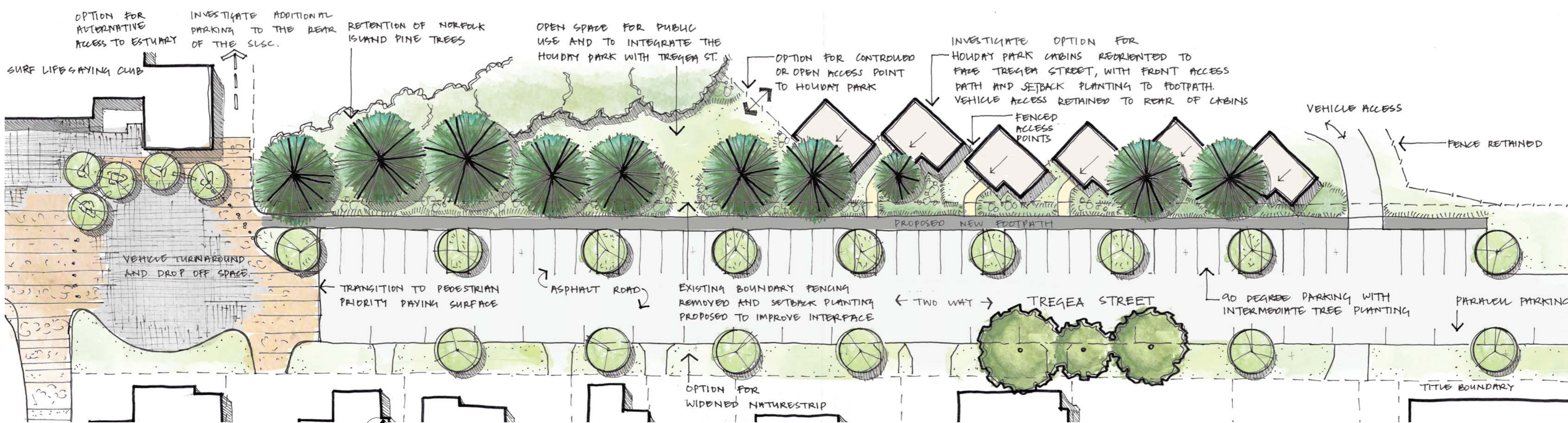
TIMBER SELECTION TO BE LOW MAINTENANCE
AND LOW COMBUSTIBILITY

Lord Street Sections
Drawing 4 & 5



Lord Street materiality

TREGEA STREET



Overview plan for Tregaea Street
Drawing 6



KEY POINTS

- TWO WAY STREET.
- ASPHALT ROAD SURFACE.
- NEW FOOTPATH TO WEST SIDE OF STREET.
- ADDITIONAL PARKING BAYS.
- PAVED TOWN PLAZA.
- OPPORTUNITY TO REORIENT HOLIDAY PARK CABINS AND IMPROVE THE INTERFACE TO TREGEA ST.
- 90 DEGREE PARKING TO WEST SIDE OF STREET.
- PARALLEL PARKING TO EAST SIDE OF STREET.
- VEHICLE TURNAROUND SIZED FOR CARRAVANS AND LONG VEHICLES.



EXISTING PINE TREES RETAINED

PROPERTY BOUNDARY

TREGEA STREET

CABINS ORIENTED TO TREGEA STREET WITH FRONT ACCESS AND SETBACK PLANTING

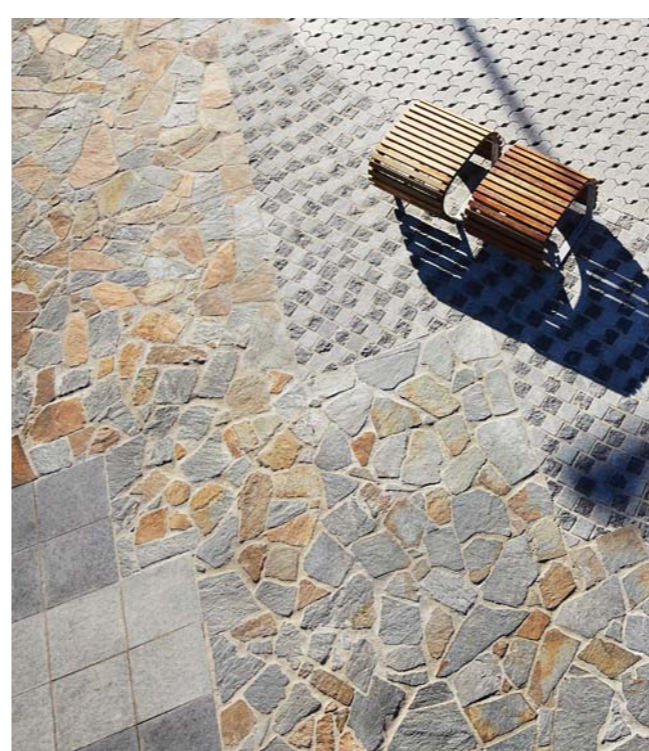
PEDESTRIAN FOOTPATH

PARKING BAY / TREE PLANTING OUTLAND

TWO WAY ROAD

PARALLEL PARKING

Tregaea Street Section
Drawing 7



Tregaea Street materiality