

CORANGAMITE SHIRE

# YOUR GUIDE TO OUR SERVICES



CORANGAMITE  
SHIRE

## ESSENTIAL NUMBERS

---

### CONTACTING COUNCIL

**Phone** 5593 7100

**Email** shire@corangamite.vic.gov.au

**Web** corangamite.vic.gov.au

**Address** Civic Centre, 181

Manifold Street, Camperdown

### USEFUL CONTACTS

---

Maternal and Child Health Line	13 22 29
After Hours GP Helpline	1800 022 222
Nurse On Call	1300 60 60 24
South West Healthcare (Camperdown)	5593 7300
Terang & Mortlake Health Service	5592 0222
Beaufort & Skipton Health Service	5340 1100
Timboon & District Healthcare Service	5558 6000
South West Healthcare (Lismore)	5558 3000
Wannon Water	1300 926 666
Powercor	13 24 12
EPA Victoria	1300 372 842
VicRoads (general)	13 11 71
VicRoads (traffic hazards)	13 11 70
Wildlife Victoria (emergencies)	8400 7300
Kids Helpline	1800 551 800
Lifeline (24-hour support)	13 11 14
Taxi Service	Camperdown 0419 764 981
	Terang 0412 981 798
	Timboon 0438 407 777

#### NEW RESIDENT CHECKLIST HAVE YOU:

- |  |   |
|--|---|
| <input type="checkbox"/> Paid your rates and are aware of rates periods        | <input type="checkbox"/> Connected utilities in your name |
| <input type="checkbox"/> Checked your waste service schedules and requirements | <input type="checkbox"/> Registered on the electoral role |
|  | <input type="checkbox"/> Registered your pet              |

# CONTENTS

## ABOUT CORANGAMITE SHIRE

WELCOME

REPORT A PROBLEM OR MAKE A REQUEST

ABOUT CORANGAMITE

COUNCIL AND YOUR COUNCILLORS

ELECTIONS

ORGANISATIONAL STRUCTURE

COUNCIL GRANTS AND AWARDS

FESTIVALS AND EVENTS

## INFORMATION ABOUT OUR SERVICES

AGED AND DISABILITY SERVICES

FAMILY AND CHILDREN'S SERVICES

YOUNG PEOPLE

ARTS, CULTURE AND RECREATION

LOCAL LAWS AND ANIMAL CONTROL

PUBLIC HEALTH

SUPPORT SERVICES FOR PEOPLE IN CORNGAMITE SHIRE

PLANNING AND BUILDING SERVICES

RATES AND VALUATIONS

WASTE AND RECYCLING

ROADS, FOOTPATHS AND DRAINAGE

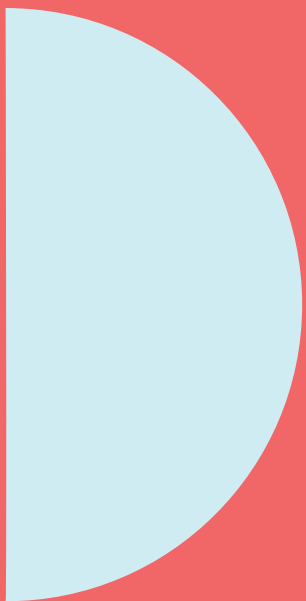
BUSINESS, INDUSTRY AND TOURISM

COMMUNITY PLANNING

ENVIRONMENT

## INDEX

# ABOUT CORANGAMITE SHIRE







## WELCOME TO CORANGAMITE SHIRE

Corangamite Shire is a large rural shire council employing approximately 204 full time equivalent (FTE) staff that provides a diverse range of services and programs to the community.

Services include aged care, recreation, arts and culture, family, children and youth, planning, roads, drains and footpaths, waste, parks,

gardens and local laws. This guide provides a comprehensive outline of our services and programs.

We are here to help! If you have any questions or wish to discuss something further, please contact us on **5593 7100**, visit our website, **[corangamite.vic.gov.au](http://corangamite.vic.gov.au)** or, send us an email **[shire@corangamite.vic.gov.au](mailto:shire@corangamite.vic.gov.au)**

## OUR WEBSITE

[corangamite.vic.gov.au](http://corangamite.vic.gov.au)



Visit us online for more detailed information about Council services, events and news.

- Visit the **Latest News** section for updates.
- Visit the **Conversations** section to have a say on proposed plans or documents.
- Type what you're looking for in the **Search Toolbar**.
- Check out our **Events Calendar** to find out what is coming up near you.
- **Pay** your rates, aged-care and child-care accounts and animal registrations online.

## HOW DO I REPORT A PROBLEM OR MAKE A REQUEST?

Contact our friendly staff at the Civic Centre:

**Phone:** 5593 7100

**Email:** [shire@corangamite.vic.gov.au](mailto:shire@corangamite.vic.gov.au)

**Online:** [corangamite.vic.gov.au](http://corangamite.vic.gov.au) and go to 'Customer Request' to complete an online form

### Some common requests and issues include:

- Altering address and other personal information for rates
- Animal registration forms
- Pruning and maintenance of street trees
- Repairs or replacement of bins
- Potholes in roads.

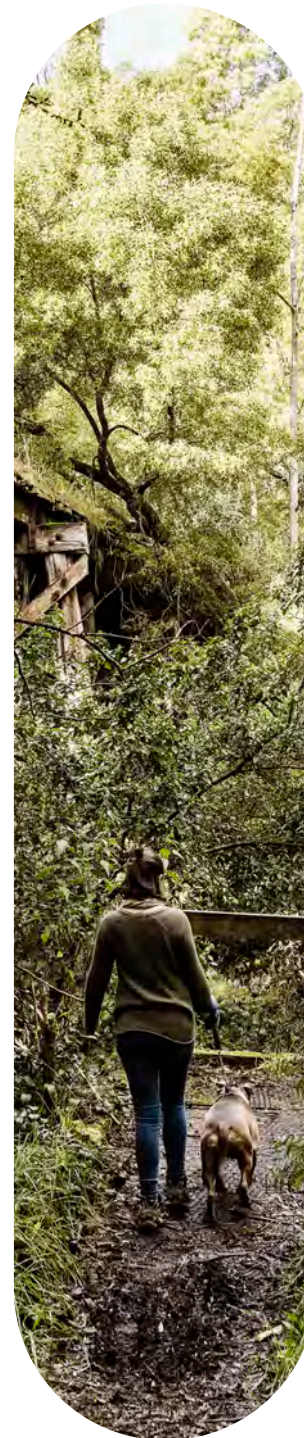
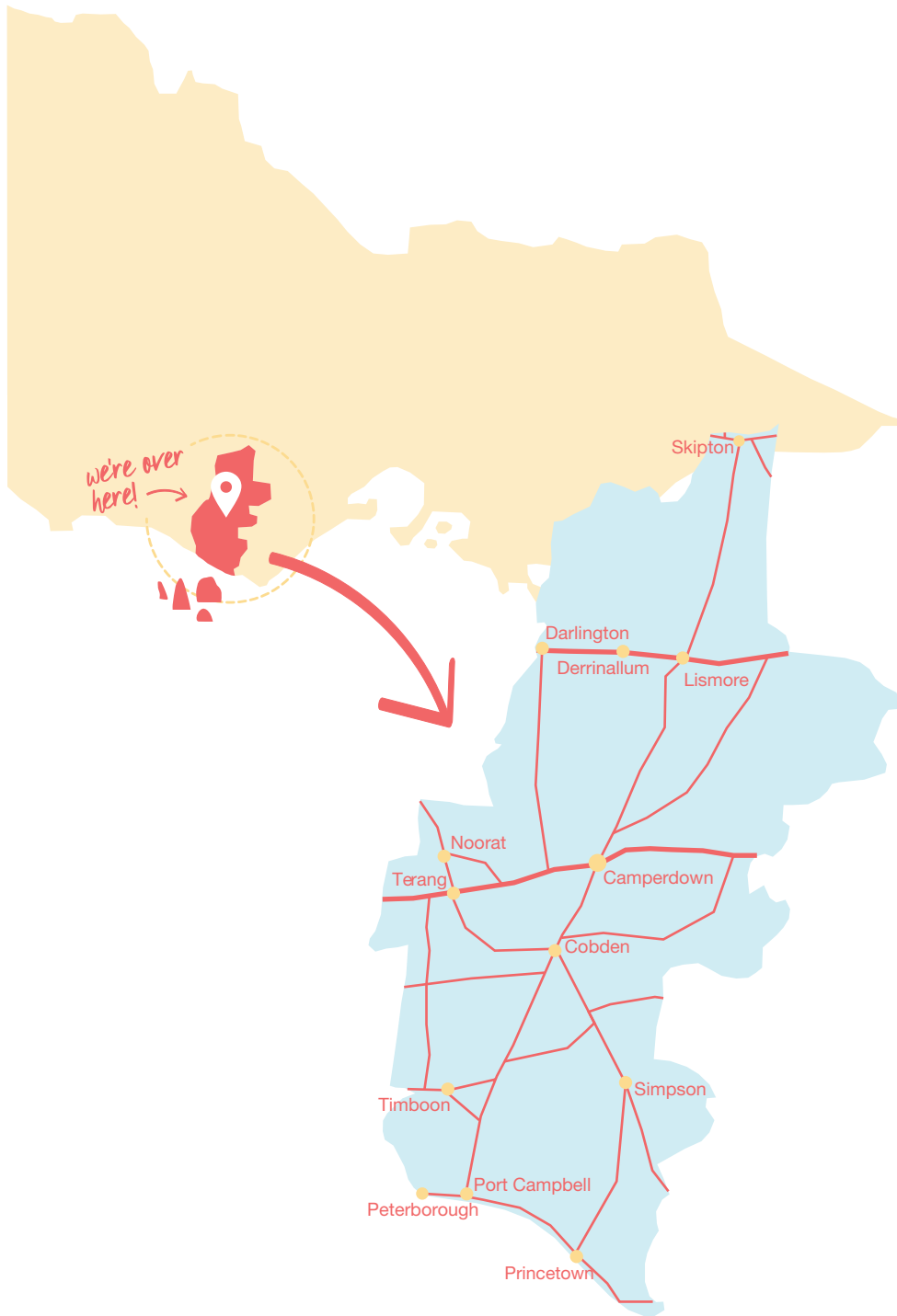
## STAY IN THE LOOP VIA SOCIAL MEDIA



**Twitter** Corangamite SC

**Facebook** Corangamite Shire

**Instagram** Corangamite Shire



## ABOUT CORANGAMITE

Located two hours south-west of Melbourne, Corangamite is a large rural shire with a population of 15,929 (ABS 2017).

From the wild Southern Ocean and rugged Shipwreck Coast in the south, our boundaries stretch 120 kilometres past forests and fertile farmland to the grazing expanses of the north. Our large geographic area of 4,400 km<sup>2</sup> is home to a number of stunning and diverse natural landscapes, including the world-renowned Twelve Apostles and Port Campbell National Park. We have state parks, some of the deepest lakes in Australia, dense bush and grassland, and plains dotted with dormant volcanoes as far as the eye can see.

Our largest township – Camperdown (pop. 3,332) – is both the geographic and commercial centre of Corangamite Shire. Terang (pop. 2,272) and Noorat (pop. 333) are a 20-minute drive west, Cobden

(pop. 1,877) is 10 minutes south, while Timboon (pop. 1,986) is 30 minutes south. Smaller towns in the north include Skipton (pop. 586), Derrinallum (pop. 415), Darlington (pop. 107) and Lismore (pop. 420). In the south there are the small coastal towns of Princetown (pop. 241) and Port Campbell (pop. 478) and the farming community of Simpson (pop. 569).

Much of the rural area in Corangamite Shire is used for agriculture, particularly dairy farming, sheep and cattle grazing, and grain growing. Tourism is also an important industry, especially in the south along the Great Ocean Road.

## COUNCIL

Our community is represented by seven Councillors from five wards who work to represent their communities and to ensure the whole Shire benefits from sound and transparent decision-making across all areas of Council business.

Corangamite Shire is responsible for providing a broad range of services to meet the needs of our residents at all stages of life. From recreational facilities to roads and bridges, home care for the elderly to child-care and preschools we take pride in delivering friendly and efficient support both to individuals and the community.

We are committed to showing leadership through sustainable practices. Information and resources for living sustainably and what we are doing to reduce our impact on the environment can be found on our website or by contacting our Customer Service team.



**CR JO BEARD**  
SOUTH CENTRAL WARD

jo.beard@corangamite.vic.gov.au  
0417 369 457



**CR NICK COLE**  
NORTH WARD

nicholas.cole@corangamite.vic.gov.au  
0455 111 459



**CR GERALDINE CONHEADY**  
CENTRAL WARD

geraldine.conheady@corangamite.vic.gov.au  
0418 689 617



**CR RUTH GSTREIN**  
CENTRAL WARD

ruth.gstrein@corangamite.vic.gov.au  
0407 320 283



**CR LAURIE HICKEY**  
CENTRAL WARD

laurie.hickey@corangamite.vic.gov.au  
0455 111 670



**CR KATE MAKIN**  
SOUTH CENTRAL WARD

kate.makin@corangamite.vic.gov.au  
0427 983 566



**CR JAMIE VOGELS**  
COASTAL WARD

jamie.vogels@corangamite.vic.gov.au  
0455 111 645

## ELECTIONS

Every four years, voters elect the representatives who form the Corangamite Shire Council. A person is eligible to vote in the elections if they:

- are a resident of the municipality
- owns a rateable property in the municipality
- occupy a rateable property in the municipality; or
- are a director or company secretary of a corporation which owns or occupies rateable property in the municipality.

The municipality is divided into five wards, with three councillors representing Central Ward and one each representing the remaining four. With the current ward structure, people can only vote for those nominated in their particular ward. Councillors are responsible for electing the Mayor and setting a mayoral term.

## GET INVOLVED

### COUNCIL MEETINGS

Council meetings are usually held every fourth Tuesday of the month, except for public holidays when the meeting is held on a Wednesday, and in December when the meeting is held a week earlier. Meetings are held at the Killara Centre in Camperdown or at a venue in one of the Shire's five wards, and commence at 7 pm. Members of the public are welcome to attend in person or view the meeting livestreamed on Council's Facebook page.

### MEETING AGENDAS

Copies of Council meeting agendas are available on Council's website from the Friday afternoon prior to a Council meeting. Minutes of previous meetings are also available on Council's website.

### PRESENTATIONS TO COUNCIL

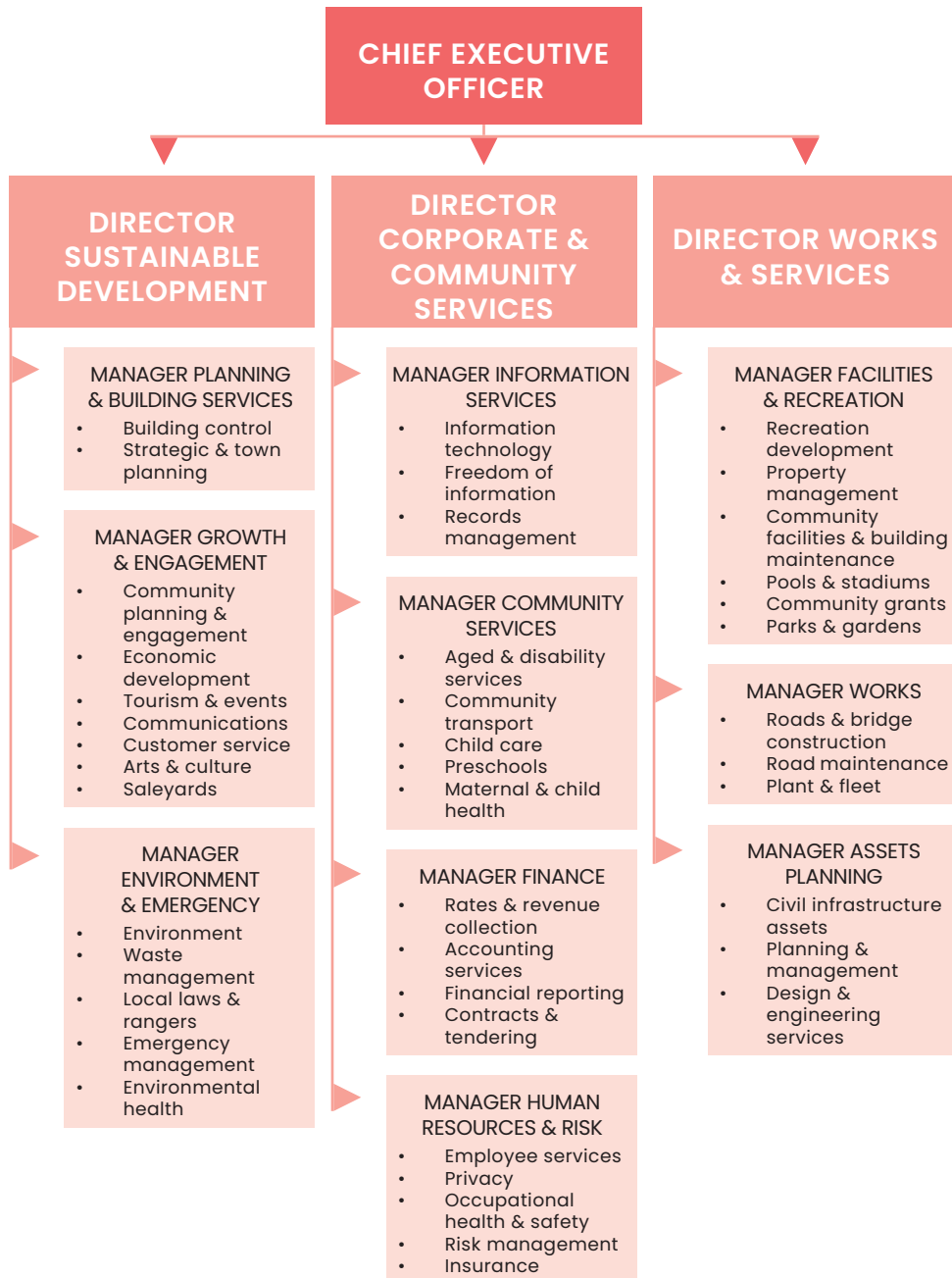
There is an opportunity to make a formal presentation to Council at the start of each meeting in support of a submission or about an item on the meeting agenda. Requests to address Council must be received by 5 pm on the day prior to the Council meeting. Presentations must not exceed five minutes, although Councillors may ask questions after each presentation. To address Council at a meeting, please contact the Governance team on **5593 7113** or email **governance@corangamite.vic.gov.au**.

### OPEN FORUMS

If you have a question or statement to make, you may participate in the open forum section of the Council meeting. We encourage questions or statements to not exceed five minutes. If a question cannot be answered at the meeting, we undertake to provide an answer in writing as soon as possible.



# OUR PEOPLE



# COUNCIL GRANTS

Corangamite Shire offers a variety of grants to help individuals, organisations, community groups, sporting clubs and businesses achieve their goals. If you live, work, participate or volunteer in Corangamite, there may be a grant for you.

<b>EVENTS &amp; FESTIVALS GRANTS PROGRAM</b>	Offers up to \$15,000, made up of a maximum of \$10,000 grant funding and a maximum of \$5,000 in-kind support. It is intended for major events that increase visitation and stimulate economic activity in the Shire.
<b>COMMUNITY GRANTS PROGRAM</b>	Offers \$1-for-\$1 funding up to \$1,000 to community groups operating in Corangamite Shire to assist with workshops and equipment purchases, planning activities, community events and the development of new community, leisure, cultural or recreational programs.
<b>FACILITY GRANTS PROGRAM</b>	Funding is offered on a \$1-for-\$1 basis up to \$2,000 to Committees of Management to assist with improvements at Council's halls and recreation reserves
<b>ENVIRONMENT SUPPORT GRANTS PROGRAM</b>	Funding is offered on a \$1-for-\$1 basis up to \$2,500 to incorporated community groups, organisations and individuals to undertake environmental and sustainability projects on public and private land within Corangamite Shire.
<b>BUSINESS FAÇADE IMPROVEMENT PROGRAM</b>	Offers \$1-for-\$1 funding up to \$3,000 for businesses in Shire townships to improve the appearance and/or access to their shopfronts.
<b>QUICK RESPONSE GRANTS</b>	Offers a maximum of \$500 to community groups and individuals within the Shire that will result in beneficial projects and activities for local communities.
<b>SMALL BUSINESS ASSISTANCE PROGRAM</b>	Offers \$1-for-\$1 funding up to \$5,000 that is designed for small businesses to encourage innovation, adaptation or diversification.

Applicants are always encouraged to contact Council prior to submission to determine eligibility and other relevant information. Guidelines and application forms for grants are available online at [corangamite.vic.gov.au/grants](http://corangamite.vic.gov.au/grants) or by

contacting Council staff on **5593 7100** or [grants@corangamite.vic.gov.au](mailto:grants@corangamite.vic.gov.au). Hardcopies are available on request from Camperdown Civic Centre.

## COUNCIL AWARDS

### AUSTRALIA DAY AWARDS

Each year Corangamite Shire celebrates Australia Day in one of its townships and presents awards to its Citizen of the Year, Community Event of the Year and Young Citizen of the Year. Several Australia Day Sports Awards and general Achievement Awards are also presented. If you know somebody worthy of an Australia Day Award, contact us on 5593 7100. Nominations open in August each year.

Celebrations normally commence at 10.30 am with award presentations followed by a free morning tea and live entertainment.

### YOUTH ACHIEVEMENT AWARDS

In November each year we celebrate the achievements, talents and contributions of our young people between the ages of 12-25. Categories include Sport (individual and group), Workplace Endeavour, Agriculture, Community Service (individual and group), Performing Arts, Music, Environment and Visual and Multimedia. Nominations usually open in August, with forms available on our website.

### CITIZENSHIP CEREMONIES

The Mayor conducts Australian citizenship ceremonies on Australia Day each year, or on other occasions during the year. The ceremony can take place at the Civic Centre in Camperdown or at a location chosen by the recipient.

To determine if you are eligible for citizenship or how to apply to become an Australian citizen visit [citizenship.gov.au](http://citizenship.gov.au) or phone 13 18 80.





## FESTIVALS AND EVENTS

For a full list of community events, visit the events calendar on our website, or contact us on **5593 7100** to request a hardcopy.

**Camperdown Races**

**Camperdown Show**

**Colour Terang Festival**

**Cobden Spring Festival**

**Crayfest** Port Campbell

**Heytesbury Agricultural Show** Simpson

**Inner Varnika** Bookaar

**Kangaroobie Klassic Adventure Race** Princetown

**Lake Bullen Merri Easter Sailing Regatta** Camperdown

**Lakes & Craters International Horse Trials** Camperdown

**Loch Hart Music Festival** Princetown

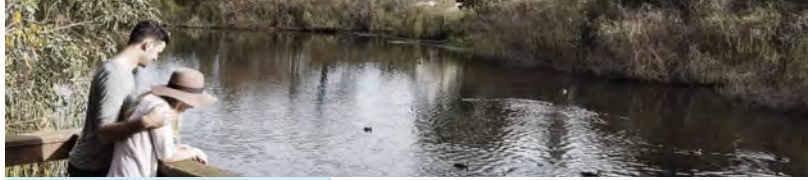
**Noorat Show**

**Robert Burns Scottish Festival** Camperdown

**Rock the Clock** Camperdown

**Terang Races**

**Tracks** Timboon



MOUNT EMU CREEK



STEWART PARK, SKIPTON



MT ELEPHANT, DERRINALLUM



LAKE TOOLIOROOK, LISMORE



MT NOORAT



TERANG



LAKE GNOTUK, CAMPERDOWN



MT LEURA, CAMPERDOWN



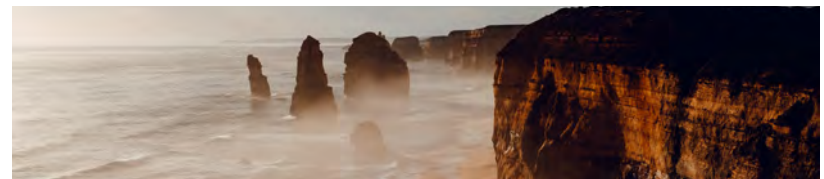
COBDEN LAKE



TIMBOON RAIL TRAIL



PORT CAMPBELL



12 APOSTLES, PORT CAMPBELL



# INFORMATION ABOUT OUR SERVICES







## POSITIVE AGEING AND INCLUSION

The services offered by Positive Ageing and Inclusion focus on assisting the frail, aged or those with a disability to continue living in their own homes.

These services include:

- domestic assistance
- community transport
- Meals on Wheels
- shopping
- home modifications
- personal care
- respite care
- property maintenance (lawns).

An in-home assessment is undertaken by assessment officers to determine eligibility, level of service required and the fee payable. Those aged 65 and over should contact MyAgedCare on **1800 200 422**. For those under 65 contact the Assessment Officer on **5593 7100**, or **5558 6033** for residents living in the Cobden, Simpson and Timboon areas.

## RESPITE CARE

Having a break is sometimes very important for carers. We have experienced staff who can come to your home and look after you while your carer goes out or does other things for a short time. We will work with you and your carer to plan carefully for when they are away so you are well looked after.

## HOME MAINTENANCE

Our main job is mowing lawns for safe access, not a complete gardening service. Therefore, if you have a large lawn area it may not all be mowed. We can also help with modifications to make your home safer.

## DOMESTIC ASSISTANCE

We have staff who can come to your house and help with housework.

They can:

- sweep, mop or vacuum floors
- clean bathrooms and toilets
- clean benches and cupboards
- make or change beds
- assist with laundry.

## PERSONAL CARE

Our community care staff have been trained and have extensive experience helping look after your personal hygiene.

They help with:

- bathing and showering
- dressing and undressing
- toileting
- washing hair
- eating and drinking.

## PLANNED ACTIVITY GROUPS

Planned Activity Groups operate in Skipton, Lismore, Timboon, Cobden, Terang and Camperdown. Activities may include art and craft, music, games, quizzes and excursions.

Adult day care centre	Location	Days and times	Contact
Camperdown	David Newman Adult Day Centre 20A Church Street	Tuesday, Wednesday & Friday 10.30 am-2.30 pm; Dementia specific Monday 10 am-2 pm	5593 7364
Cobden	Victoria Street	Tuesday & Wednesday 10 am-3 pm	5595 1099
Lismore	LADADAC 102 High Street	Monday & Wednesday 10 am-3 pm	5558 3000
Skipton	Blake Street	Tuesday 10 am-2 pm	5340 1127
Terang	66 High Street	Monday to Friday 9.30 am-3.30 pm	5592 0311
Timboon	Bailey Street	Thursday & Friday 10 am-3 pm	5558 6000

## COMMUNITY TRANSPORT

If you have no way of getting to and from important medical appointments we may be able to help. We have volunteer drivers who use their own cars to pick you up from home, drive you to your appointment and return you home again. We also run a fortnightly Community Bus from Lismore and Derrinallum to Camperdown and return.

### DISABILITY PARKING

#### How to Apply

1. Start your application online at [accessibleparking.vic.gov.au](http://accessibleparking.vic.gov.au).
2. If you don't have internet access, this can be done at the Civic Centre, Camperdown.
3. You'll receive an application reference number via SMS\*.
4. Take your reference number to your general practitioner (GP) or occupational therapist (OT).
5. Your GP or OT will complete an online assessment and submit your application.
6. Your local council will review the application.
7. If your application is successful, you will receive your permit in the mail.

Application outcomes will take approximately 10-15 days to arrive in the mail from the time of your GP or OT visit.

## PERSONAL ALARMS

People who live alone and who have a medical condition, disability or are frail and at risk of not being able to let anyone know if they need emergency help, may be eligible to receive a personal alarm. The alarm is a pendant that can be worn around the neck or wrist with a button that can be pressed to let people know if you need urgent assistance. For more information contact the Assessment team on **5593 7100**.

### NATIONAL DISABILITY INSURANCE SCHEME (NDIS)

Corangamite Shire is registered to provide the following NDIS services:

- daily personal activities
- assistance with community and social participation
- transport for community, social, economic and daily life activities
- domestic tasks to maintain your home environment.

For more information on support provided by the National Disability Insurance Scheme or to check your eligibility contact the NDIS on **1800 800 110** or visit the NDIS website [ndis.gov.au](http://ndis.gov.au).

## SENIOR CITIZENS CENTRES

Centres operate in Camperdown, Terang, Lismore, Derrinallum, Skipton, Cobden and Timboon, and offer a variety of activities for people aged 55 years and older.

Town	Location	Days & Times	Contact
Camperdown	Killara Centre	First Monday of each month at 1.30 pm	0407 851 856
Cobden	Victoria Street	Carpet bowls Monday 1-3.30 pm with free afternoon tea. Cards Monday, Thursday & Saturday 1-3.30 pm with free afternoon tea	5595 1099
Lismore & Derrinallum	Alternates between towns	First Friday of each month at 1.30 pm	5597 6705 5597 6525
Skipton	Skipton Mechanics Hall	Monday 2-4 pm	0417 844 499
Terang	The Promenade	Social mornings Tuesday & Thursday 10-noon; Euchre tournament every second Wednesday 8 pm; Craft every second Friday 10.30 am; Walkers every Wednesday 9.30 am; Bridge every Thursday 1.30 pm	5592 1882
Timboon	Bailey Street	Last Monday of each month at 11 am	5598 6326 0407 504 251



## FAMILY AND CHILDREN'S SERVICES

For more information including vacancies and available services contact Council on **5593 7100**.

### CHILD CARE SERVICES

Corangamite Shire provides a number of child care options and a decentralised service where parents do not have to travel long distances to access care. There are also privately owned and operated child care centres in Camperdown, Terang and Timboon. Corangamite Shire offers the following range of services:

- Family Day Care
- Mobile Child Care/Long Day Care
- After Kindergarten and After School Care.

### FAMILY DAY CARE

Family Day Care provides a safe, secure and stimulating home environment for your child, with care being provided for small groups of children in the educator's home. In Family Day Care, the hours of care are flexible and can be matched to your family's needs. Types of care provided include:

- full-time or part-time care
- before/after school care
- casual care
- vacation care.

### KINDERGARTENS

Council operates seven Kindergartens as an Early Years Manager (EYM) and provides programs for every child who is 3 (first year) or 4 years (second year) of age before 30 April in their year of enrollment for up to 15 hours per week. Programs are approved and subsidised by the Victorian Government. All programs are play based and led by a qualified early childhood teacher.

Council is a Childsafe organisation.



### CHILD CARE

An early years educational and care service designed to provide high quality child care. Visiting Port Campbell, Ecklin, Glenormiston, Derrinallum, Lismore, and Skipton, the service offers supportive early learning programs for children and families in community halls, kindergartens and recreation reserve facilities. Care is available to any pre-school child between six months and six years of age.

Our Early Learning programs are play based and offer a balance of spontaneous, adult initiated and child led learning. Our programs comply with and are guided by approved National and Victorian Learning Frameworks.

### PLAYGROUPS

Corangamite Shire has a number of playgroups operating in its towns. Visit Playgroup Victoria's website [playgroup.org.au](http://playgroup.org.au) for more information.

### AFTER KINDERGARTEN AND AFTER SCHOOL CARE

Corangamite Shire currently offers After Kindergarten and After School Care in Timboon and Terang.

### IMMUNISATIONS

Immunisations for children from birth to school age are given at two, four, six, twelve and 18 months of age, and at four years. An appointment can be made at any of our Maternal & Child Health centres on **1800 552 902**.



Location	Kinder	Mobile Child Care/ Long Day Care	Playgroup <sup>^</sup>	After Kinder & After School Care	Maternal Child Health Centres
Camperdown	**Camperdown, Campbell Street 5593 1936		Camperdown, Kanandah Kinder, Campbell Street		Camperdown, Campbell Street
Cobden	Cobden, Victoria Street 0418 943 450		Cobden, Victoria Street		Cobden, Victoria Street
Derrinallum	*Derrinallum, Robertson Street 5597 6694	Derrinallum Kindergarten			
Lismore	*Lismore, William Street 5596 2221	Lismore Kindergarten	Lismore, Grimwade Park		Lismore, Community Health Centre
Port Campbell		Port Campbell Recreation Reserve			
Prinetown			Prinetown, Wiridijil Hall, Prinetown Road		
Simpson	Simpson, Prinetown Road 5594 3401		Simpson, Early Learning Centre, Barramul Street		Simpson, Kindergarten Hub
Skipton	Skipton, Montgomery Street 5340 2208	Skipton Kindergarten Monday and Friday			Beaufort & Skipton Health Service, Blake Street
Terang	Terang, Dow Street 0447 430 940	Glenormiston Tuesday Ecklin Hall Thursday and Friday		Monday-Friday	Terang Children's Centre, Dow Street
Timboon	Timboon, Wark Street 5598 3248		Timboon, Recreation Reserve	Monday-Friday	Timboon and District Healthcare Service, Wark Street

<sup>^</sup>To check the most up to date and new play group information please visit [www.playgroup.org.au](http://www.playgroup.org.au). \*Lismore and Derrinallum are jointly managed as the Western Plains Kindergarten and the service is shared between venues. \*\*Please contact Camperdown Kindergarten directly on 5593 1936.

## MATERNAL AND CHILD HEALTH

The Maternal and Child Health Service is for families with children from birth to school age. It focuses on health and development including physical, social and emotional wellbeing that affects young children and their families.

Maternal and child health centres are staffed by registered nurses with qualifications in midwifery, and family and child health. Our staff are experienced in dealing with family health issues and concerns. This free service is jointly funded by the Victorian government and local government.

At a Maternal and Child Health Service you can:

- Get information, support and advice on parenting, child health, development and learning, child behaviour, immunisation, breastfeeding, nutrition, safety and family planning.
- Attend at specific times during your child's early years for a one-on-one consultation that includes a health and development review.
- Take advantage of additional activities, for example first-time parent groups and educational sessions.
- Participate in a parent group where you can get information and meet other parents in the local area.

## HOW OFTEN SHOULD I VISIT?

1. Home visit
2. Two weeks
3. Four weeks
4. Eight weeks
5. Four months
6. Eight months
7. 12 months
8. 18 months
9. Two years
10. Three-and-a-half years

To book an appointment with one of our maternal and child health nurses please phone **1800 552 902**.



## YOUNG PEOPLE

Corangamite Shire's Youth Services team works closely with young people between the ages of 12-25 to promote their engagement and participation in the community, while developing their social, emotional and physical wellbeing.

### FREEZA

The FReeZa Program provides opportunities for young people to enjoy live music, dance parties and other cultural, recreational and artistic events that are drug-alcohol-and smoke-free in supervised and safe venues.

### YOUTH COUNCIL

The Youth Council comprises up to 17 members from across the Shire, aged between 12-20 years. The Team supports delivery of Council's Youth Strategy SYNC and provides advice to Council on issues affecting young people in our Shire. The Youth Council highlights issues affecting youth and helps to deliver and expand services to young people.

### YOUTH FEST

YouthFest! is an all-inclusive event that shines the spotlight on Corangamite Shire's young people. This annual event celebrates and showcases the diversity of our youth community and recognises all young people as valued members of our community. YouthFest! is all about supporting and inspiring the youth of Corangamite.

### GET IN TOUCH

**Facebook** [csyouthservices](#)  
**Instagram** [cor.youth.crew](#)



## ARTS, CULTURE AND RECREATION

### HALLS AND COMMUNITY CENTRES

Council has a number of community centres and halls that are available to hire for functions, meetings and special events.

Venue	Location	Rooms
Camperdown Community Centre	212 Manifold Street	Theatre Royal, Killara Centre, McCabe Room
Cobden Civic Hall	53-55 Victoria Street	Heytesbury Room, Supper room, Main hall
Darlington Mechanics Insitute Hall	2 Ware Street	Main hall
Derrinallum Community Hall	74 Main Street	Supper room, main hall
Lismore Community Centre	Seymour Street	Main hall, squash courts
Noorat Community Centre	Mckinnons Bridge Road	Large function room, bar, commercial kitchen
Port Campbell Community Centre	Desailly Street	Meeting room, main hall
Simpson Public Hall	Barramul Street	Main hall
Skipton Mechanics Institute Hall	Anderson Street	Supper room, main hall
Terang Civic Hall	105 High Street	Rose Room, main hall
Timboon & District Public Hall	57 Bailey Street	Main hall, supper room

## LIBRARIES

Libraries operate in Camperdown, Cobden, Derrinallum, Terang and Timboon providing safe and relaxing spaces for everyone in our communities. The libraries offer a wide range of services to the community including:

- borrowing services
- free wifi
- local and family history resources
- photocopying
- newspapers
- eresources
- programs and activities (children's rhyme time & adult book chats).

Town	Location	Contact	More information
Camperdown	212 Manifold Street	5593 2356	<a href="http://corangamite.vic.gov.au/libraries">corangamite.vic.gov.au/ Libraries</a>
Cobden	55 Victoria Street	5595 1228	
Derrinallum	44 Main Street	5597 6658	
Terang	135 High Street	5592 1397	
Timboon	Timboon P-12 School Wark Street	5598 3394	

## SPORTING CENTRES

Our sporting centres offer a range of sports including basketball, netball, badminton, volleyball and indoor soccer. Camperdown, Terang and Timboon centres also offer health and fitness facilities and/or classes.

Name	Location	Contact
Camperdown	Fuller Street	5593 7100
Cobden	McKenzie Street	5595 1202
Terang	Strong Street	5592 1747
Timboon	Hamilton Street	5598 3445

## SWIMMING POOLS

Corangamite Shire's pools open in November and close in March each year.

For more information, visit [corangamite.vic.gov.au/swimmingpools](http://corangamite.vic.gov.au/swimmingpools) or the Corangamite Shire swimming pools Facebook page.

Pool	Season	Contact
Camperdown, Curdie Street	November-March	0447 774 780
Cobden, Victoria Street	November-March	0437 817 621
Lismore, Cameron Street	November-March	5596 2212
Skipton, Blake Street	November-March	5340 2234
Terang, Golf Club Road	November-March	5592 1862
Timboon, Lambert Street	November-March	5598 3285

## SKATE PARKS

Name	Address
Camperdown Skate Park	Lawrence Street
Cobden Skate Park	McKenzie Street
Port Campbell Skate Park	Corner Morrison & Lord Street
Simpson Skate Park	Barramul Street
Skipton Skate Park	Montgomery Street
Terang Skate Park	Ewing Street
Timboon Skate Park	Bailey Street



## PLAYGROUNDS

Corangamite Shire residents are fortunate to have 20 playgrounds located within the Shire. The playgrounds vary in size and the type of equipment, and are generally designed for children of all ages.

These playgrounds have various play functions for a range of ages, incorporate public art and are accessible to all.

Town	Name	Address
Camperdown	Jaycees Park	Princes Highway
Camperdown	Curdie Street Playground	Curdie Street
Camperdown	Queen's Park	Pike Street
Camperdown	Apex Park	Manifold Street
Cobden	Rotary Park	Shenfield Street
Cobden	Apex Park	Corner Victoria & Shenfield Street
Derrinallum	Derrinallum Recreation Reserve	Hamilton Highway
Lismore	Grimwade Park	Hamilton Highway
Noorat	Noorat Recreation Reserve	Mckinnons Bridge Road
Port Campbell	Port Campbell Recreation Reserve	Desailly Street
Port Campbell	Port Campbell Playspace	Corner Morris & Lord Street
Princetown	Princetown Recreation Reserve	Old Coach Road
Simpson	Jaycees Park	Barramul Street
Skipton	Jubilee Park	Glenelg Highway
Terang	Apex Playground	Princes Highway
Timboon	Timboon Playspace	Timboon-Nullawarre Road
Timboon	Masonic Park	Corner Barrett & Bond Street

## THEATRE ROYAL CAMPERDOWN

The Theatre Royal hosts cultural performances, movies and special events. School holiday programs usually include a movie or two for free. For information on movies visit [corangamite.vic.gov.au](http://corangamite.vic.gov.au).

## YAK

Young Active Kids (YAK) is a weekly, one-hour class offered in Camperdown and Terang. It enables children to be active and work off some energy while joining in and socialising with other children. Quality equipment and programmed activities are used during class time. To enrol your child and find out more information, visit [corangamite.vic.gov.au](http://corangamite.vic.gov.au).

## SCHOOL HOLIDAY PROGRAMS

Developed to encourage kids to lead an active and healthy lifestyle this program covers sports such as basketball, boxing, racquet sports and football. These programs are often held at Camperdown and Timboon Stadiums during school holiday periods.

## SENIORS WEEK

Concerts and other fun activities are part of the Seniors Week program in the first week of October. Programs are available from our website in September.

## NEED TO HIRE A VENUE?

Council has a wide range of venues available for hire. For rates and booking forms visit [corangamite.vic.gov.au](http://corangamite.vic.gov.au).

## THEATRE ROYAL

210-212 Manifold Street  
Camperdown  
Suitable for weddings, performances and large functions. Kitchen available.

## KILLARA CENTRE

210-212 Manifold Street  
Camperdown  
Suitable for meetings and smaller functions. Kitchen available. Projector, lectern and WIFI available. Fits approximately 50-90 people depending on whether tables are needed.

## McCABE ROOM

210-212 Manifold Street  
Camperdown  
Suitable for meetings. Projector, lectern and WIFI available. Fits approximately 30 people seated at tables.



## COUNCIL MAINTAINED ROADS, FOOTPATHS AND DRAINAGE

Corangamite Shire is responsible for local road, drainage, road sign and footpath maintenance, signs and street sweeping across our local roads network.

### REPORTING AN ISSUE ON LOCAL ROADS

Corangamite Shire is responsible for the maintenance of all local roads and footpaths in the municipality.

For all local road and footpath maintenance enquiries, you can make a request via our online Customer Request service at [corangamite.vic.gov.au](http://corangamite.vic.gov.au) or phone **5593 7100** and speak to one of our customer service officers.

### DRAINAGE

Corangamite Shire clears blocked pipes, pits, culverts and drains. Storm water drainage, from buildings to the connection point into the drainage systems, is the responsibility of property owners, as are crossovers including the culverts and pipes at the entrance to private property. All buildings must install adequate storm water drainage.

### ROAD SIGNS

Corangamite Shire is responsible for the installation, cleaning, repairs and relocation of road signs on local roads.

### STREET SWEEPING

Operates weekly in townships where there are kerbs and as required in other areas.

### ROAD, FOOTPATH OR CAPITAL WORKS PROGRAMS

The need for a new sealed road, kerb and channel or footpath is usually identified by Council, the property owner or the wider community. Property owners are notified of the proposal, provided with an estimate of costs, and asked to indicate whether they support proceeding with the project. Corangamite Shire's policy is that benefiting property owners will not pay more than 65 per cent of the total project cost and the majority of property owners must approve before Council proceeds with detailed designs and costings.



## REGIONAL ROADS VICTORIA

Regional Roads Victoria (RRV) is responsible for the maintenance of the main (arterial) roads across Corangamite Shire (see page 39). Within our towns RRV maintains the highways and arterial roads that run through townships while Council are responsible for the maintenance of parking bays, footpaths and vegetation within the township.

To talk to RRV about road maintenance or to enquire about works in your area by calling **133 RRV (13 37 78)** Monday to Friday 8 am to 6 pm. VicRoads can be contacted after these hours on **13 11 70**. Alternatively you can send an enquiry via [regionalroads.vic.gov.au/contact](https://regionalroads.vic.gov.au/contact)

## RESIDENTIAL STREETS

RRV maintains the highways and arterial roads that run through the townships. Council is responsible for maintaining parking bays, footpaths and nature strips. Phone VicRoads on **13 11 70** to report any issues with the highway or arterial roads that run through the township. Phone Council on **5593 7100** to report any issues with parking bays, footpaths and nature strips.

## RRV MANAGED HIGHWAYS

Highways are managed by Regional Roads Victoria (RRV). Phone **13 37 78** RRV, Monday-Friday between 8 am-6 pm to report hazards on the following highways.

- 1 Princes Highway
- 2 Glenelg Highway
- 3 Hamilton Highway
- 4 Great Ocean Road

## RRV MANAGED ARTERIAL ROADS

Arterial roads are managed by Regional Roads Victoria (RRV). Phone **13 37 78** RRV, Monday-Friday between 8 am-6 pm to report hazards on the following roads.

- 1 Ayresford Road
- 2 Camperdown-Lismore Road
- 3 Camperdown-Cobden Road
- 4 Cobden-Port Campbell Road
- 5 Cobden-Stonyford Road
- 6 Cobden-Warrnambool Road
- 7 Cobden-Terang Road
- 8 Darlington Road
- 9 Foxhow Road
- 10 Lavers Hill-Cobden Road
- 11 Lismore-Skipton Road
- 12 MacKinnons Bridge Road
- 13 Princetown Road
- 14 Skipton-Rokewood Road
- 15 Terang-Mortlake Road
- 16 Timboon-Colac Road
- 17 Timboon-Nullawarre Road
- 18 Timboon-Port Campbell Road
- 19 Skipton-Beaufort Road





## LOCAL LAWS AND ANIMAL CONTROL



Local laws are designed to make living in Corangamite Shire pleasant for all residents. The laws are designed to ensure that everyone enjoys the amenities of the area and to control issues that may be a nuisance or health concern for residents. Fines and penalties can apply for people breaking these laws.

Common issues covered by local laws are:

- barking and wandering dogs
- keeping domestic dogs and cats
- roadside grazing (permit forms available online)
- droving stock on the roads
- erecting a sign on a roadside
- displaying goods for sale outside a shop
- using a sandwich board to promote your business
- having chairs and tables outside a restaurant or cafe
- using parks and gardens for special events
- consumption of liquor in public places
- dangerous or unsightly land.

## ANIMALS

Council promotes responsible pet ownership and encourages pet owners to abide by the laws that have been put in place for the benefit of the entire community.

## PET REGISTRATION

All dogs and cats over the age of three months must be registered with Council. Registrations are due by 10 April each year. The cost of registration is cheaper for desexed animals. Any animals being registered with Council for the first time must be microchipped. Registration forms and current prices are available on our website.

## DISCOUNT MICROCHIPPING

In conjunction with local veterinary clinics, Corangamite Shire offers discounted microchipping for pets during Microchipping Week (usually in early April) each year before animal registration renewals.

For more information, check our website in February.

## LOST AND FOUND

Lost your animal? If we pick up your animal and it is registered, microchipped or carrying its tag, we will contact you. We also use social media to reunite pets with owners.

Impounded livestock is held for seven days before being advertised for public auction. Domestic animals are held at our pound for eight days. Release fees apply.

Please phone the Civic Centre on **5593 7100** during business hours or for after hours contacts.

## NOISE

Pet owners must ensure their animals do not annoy neighbours with noise. Council can provide advice on controlling barking dogs.

## LIMITS ON THE NUMBER OF ANIMALS

You may keep up to two registered animals without a permit in residential areas. You may keep up to five registered animals without a permit in rural areas. There are limits on the numbers of other types of animals or birds you may keep.

## WALKING YOUR DOG

Your dog must be kept under control at all times when outside your property. Dogs must be on a leash at all times where there are leash signed areas in towns. These are usually in main streets and public areas such as playgrounds.

## CLEANING UP AFTER YOUR DOG

Dog owners are required to carry a bag, clean up and properly dispose of their dog's poo in public places.

## RESTRICTED BREEDS OF DOGS

Restricted breed dogs are defined as dogs that fit the Approved Standard for Restricted Breed Dogs in Victoria. These may be pure or cross bred American Pit Bull Terriers (or Pit Bull Terriers), Perro de Presa Canarios (or Presa Canarios), Dogo Argentinos, Japanese Tosas or Fila Brasileiros.

Restricted breed dogs have not attacked a person or animal or displayed signs of aggression, but they are considered a higher risk to community safety than other breeds of dogs.

You are required by law to declare if your dog is a restricted breed dog. Failure to do so may result in a fine. For more information, visit the Agriculture Victoria website [agriculture.vic.gov.au](http://agriculture.vic.gov.au).

## INJURED ANIMALS

Injured or orphaned native animals such as kangaroos, possums and koalas on roads or in public areas should be reported to the 24-hour Wildlife Victoria hotline on **8400 7300**.

## STOCK ON ROADS

Stock on roads is a danger to motorists and a serious issue. Any cases should be reported to Corangamite Shire immediately. Owners are responsible for ensuring fencing is properly maintained – especially after storm activity – so that livestock are effectively contained.

Owners may be fined under Council's local laws for wandering stock.

## DEAD ANIMAL REMOVAL

Corangamite Shire is responsible for removing dead animals from Shire roads and public areas.

To report a dead animal on a road or public area phone **5593 7100**.

Alternatively, to report a dead animal on a Regional Roads Victoria (RRV) road phone **13 11 70**.



## FIRE PREVENTION AND PLANNING

We all have a responsibility to reduce fire dangers around our homes and property. Fires in the open air are restricted when the Fire Danger Period (FDP) is declared by the Country Fire Authority (CFA).

- Fire Danger Period (FDP)
- Total fire bans
- Outside the FDP
- Fire Hazards
- Open-air burning
- Municipal fire plan

### FIRE HAZARDS

Land should be cleared of all long grass or other hazardous materials to reduce flammable fuel. A Fire Prevention Notice may be issued to property owners that requires clean-up works to be completed within 14 days.

### ARE YOU PREPARED?

Each year, Fire Action Week provides an opportunity for residents to clean up their property in preparation for the fire season. Council provides free green waste disposal at transfer stations and Naroghid Landfill during Fire Action Week.

Residents can be fire ready by:

- keeping grass cut
- reducing fuels such as long, dry grass, fallen leaves and twigs
- clearing undergrowth and fallen branches
- moving wood and other combustible materials away from your house
- cleaning leaves from gutters
- placing weather stripping around the inside of doors and windows
- closing under house spaces and sealing other areas embers may enter
- ensuring access to adequate water supplies
- installing a sprinkler system around your home
- ensuring you have fire-fighting equipment such as ladders, hoses, buckets, rakes, mops and water pumps
- developing a Bushfire Survival Plan for your household.

### BUSHFIRE PLACES OF LAST RESORT

Having a survival plan is critical to keeping you and your family safe in an emergency. A shelter option is essential to this plan. This may include having a well prepared home or leaving early and retreating to a safer, larger town. If all else fails you may consider Bushfire Places of Last Resort in your plan. A Bushfire Place of Last Resort (BPLR) is a place of last resort in a bushfire emergency when all other bushfire plans have failed. It is a building or open space within a community that may provide some protection from radiant heat, which is the biggest killer during a bushfire.

#### BPLRs in Corangamite Shire are as follows:

**Camperdown** Manifold Street Avenue, from Bath Street to Cressy Street

**Derrinallum** Derrinallum Recreation Reserve, car park and north west of oval, Hamilton Highway

**Lismore** Lismore Recreation Reserve, between two ovals at, Seymour Street near Heriot Street

**Noorat** Noorat Recreation Reserve, Mckinnons Bridge Road

**Port Campbell** Foreshore Reserve, Cairns Street

**Skipton** Skipton Recreation Reserve, Oval, Smythe Street

**Timboon** Timboon & District Public Hall, 53 Bailey Street



## FIRE DANGER PERIOD

Each year the CFA assesses the climatic conditions and makes a decision to declare the Fire Danger Period (FDP). The FDP usually commences in November and finishes in May each year. The CFA advertises the start date in local newspapers.

No burning is permitted during the FDP unless a Schedule 13 Permit has been obtained. Permit application forms are available on our website.

Fire Danger Period start and finish dates can vary from shire to shire, so you should always check if you intend to burn early or late in the FDP. Camp fires, barbeques, welding, grinding, soldering or gas cutting are allowed unless a Total Fire Ban has been declared.

## OUTSIDE THE FDP

Outside the declared FDP, burning may be carried out. However, a number of factors need to be considered:

- It is an offence to leave a fire unattended.
- There are local laws to control burning in urban areas and for the burning of large heaps and windrows.

## TOTAL FIRE BANS

Declared by the CFA when fire danger is extremely high. No burning is allowed.

## OPEN-AIR BURNING

Without a permit a person must not light or allow to remain alight a fire in the open air in an urban area unless:

1. The fire and the matter being burnt occupy no more than one cubic metre of land and space.
2. The fire is supervised by an adult until it has completely burnt out.
3. Adequate means of extinguishing the fire are at all times available.
4. The land and overhead space within three metres of the fire and the matter being burnt is free from flammable material and vegetation of more than ten centimetres high.

Please note: You are not allowed to have a fire at all in towns during the FDP.



## PUBLIC HEALTH

Council's Environmental Health Department provides a number of programs to protect and promote public health and wellbeing in Corangamite.

We monitor:

- food safety
- hygiene standards
- disease prevention
- selling food at community events
- health protection
- pollution
- tobacco act
- coping with extreme heat.

## POLLUTION

Concerns over noise, water, and air or soil pollution should be directed to Council's Environmental Health Department on **5593 7100**. Contact the Environment Protection Authority (EPA) on **1300 372 842** if you have concerns about commercial operations.

## FOOD SAFETY

Council's Environmental Health Officers monitor hygiene standards of local food premises through annual premise assessments, food sampling and complaint investigations of sub-standard food or poor hygiene practices. Residents are urged to contact Council on **5593 7100** if they have concerns about hygiene standards of food premises.

Anyone intending to establish a food premises is required to obtain a registration. Information and application forms are available on the Business Permits section of [corangamite.vic.gov.au](http://corangamite.vic.gov.au).

## HYGIENE STANDARDS

Council monitors local hairdressers, beauticians, tattooists, piercers and commercial swimming pools and spas to ensure hygiene standards are maintained. Council also monitors accommodation places such as motels, hotels and caravan parks.

Anyone intending to establish one of these businesses is required to obtain a registration.

Information and application forms are available on the Business Permits section of [corangamite.vic.gov.au](http://corangamite.vic.gov.au).

## SELLING FOOD AT COMMUNITY EVENTS

Any individual, community group or business wishing to sell or produce food for the public will need a temporary food registration. Information regarding temporary food registrations including application forms and food safety templates are available on the Food Premises section of our website.

## HEALTH PROTECTION

Investigation of hazards to public health and advice on issues such as pest control, disposal of hazardous materials and the use of water tanks is available.

## WASTEWATER DISPOSAL (SEPTIC TANKS)

The installation or alteration of a septic tank system on properties in non-sewered areas requires a permit. For application forms, details of systems and ongoing maintenance, visit the Property section of our website.

## SUPPORT SERVICES

**Tweddle Child & Family Support Service**  
[tweddle.org.au](http://tweddle.org.au)  
9689 1577

The program enables parents with infants or children 0-3 years of age the opportunity to spend a full day addressing childhood and parenting difficulties.

**Family Assist Office**  
[servicesaustralia.gov.au](http://servicesaustralia.gov.au)

**Brophy Family and Youth Services**  
[brophy.org.au](http://brophy.org.au)  
5561 8888  
210 Timor Street, Warrnambool

**Pediatric and Adolescent Support Service Program**  
4215 8600  
Free and confidential support service for children, adolescents and young adults living with a chronic illness/disability.

**Commonwealth Carer Respite Centre**  
1800 059 059  
Provides support and information for carers of young people under 30 years of age with disabilities.

**Department of Families, Fairness and Housing (DFFH)**  
[dffh.vic.gov.au](http://dffh.vic.gov.au)  
561 9444

**OzChild**  
1300 361 680  
Specialist parenting support; counselling for parents experiencing difficulty in their role as a parents; Support for families with children with a disability

**Emma House Domestic Violence Services**  
[emmahouse.org.au](http://emmahouse.org.au)  
5561 1934

## PLANNING AND BUILDING



### PLANNING

The Planning Department covers the use, development and protection of land in Corangamite Shire. New development needs to occur in areas best suited to the proposal. Productive agricultural land needs to be protected, as does the quality of the natural and urban environment.

The Corangamite Planning Scheme is implemented by Council to achieve these objectives. Certain land use or buildings may require planning approval in addition to building approval. Our role is to provide information and advice about the local planning scheme and to process and coordinate planning applications for Council's consideration.

Our services include:

#### PLANNING

- permits (advice and applications)
- corangamite shire planning scheme
- planning certificates
- planning scheme amendments
- structure planning
- strategic planning
- project planning

#### BUILDING

- building permits
- permit services



## PERMITS

Residents are urged to contact the Planning Department for advice on whether a planning permit is required for their proposal.

Below is a list of proposals that may require an application:

- subdivisions
- construction of one or more dwellings
- removal or lopping of native vegetation
- signage
- works, buildings and demolition within a heritage overlay
- works including dams on or near creeks and rivers
- new or alterations to existing liquor licences
- operating a business from home.

## CORANGAMITE SHIRE PLANNING SCHEME

This legislation sets out strategies, policies and requirements for the use, development and protection of land. Each Victorian Planning Scheme incorporates the Victorian Planning Provisions with which all individuals and corporations must comply.

For more information on planning schemes, specific zonings, overlays, policies, definitions or relevant clauses or maps on Corangamite, go to the Department of Environment, Water and Planning website at [planning.vic.gov.au](http://planning.vic.gov.au)

## PLANNING PERMIT PROCESS

A planning permit is a legal document that gives permission for a use or development on a particular piece of land. To obtain a permit, an application must be made to Council's Planning Department. If Council agrees with the proposal, it will grant a planning permit with written conditions, and usually endorsed plans, that show what is to be built and how the land can be used.

Successful applicants must satisfy all the conditions on a planning permit and comply with the endorsed plans. Any changes to approved plans and permit conditions must be approved by Council.

If changes are required, Council may request a new or amended planning permit application to be processed for consideration. If you are going to lodge a planning application you must provide all information necessary.

This will allow a full assessment of your application at an early stage and will minimise delays. Generally, planning permits can be granted within 6-8 weeks of lodgement. However, delays in processing will occur if the application is incomplete and further information is requested.

## PLANNING SCHEME MAP

The planning scheme maps show how land is zoned, and whether it is affected by an overlay.

## ZONE REQUIREMENTS

Zones control land use and development, each one describing its purpose and requirements for subdivision, and the construction of buildings and works. Common zones are farming, residential, township, business, industrial and rural conservation. The detail of zones and provisions are the same across Victoria, with minor variations, and are controlled by State Government. Each zone provides a set of requirements that determine whether or not a planning permit is required and what Council must consider before issuing a planning permit.

## OVERLAYS

Overlays affect subdivisions, buildings and works and operate in addition to the zone requirements and generally concern environmental, landscape, heritage, built form, subdivision and land site and management issues. It is essential to check whether an overlay applies to land before beginning any use or development.

## HERITAGE PLANNING

Corangamite Shire is home to many historical sites and heritage features that give us an insight to our indigenous and pastoral history. We have undertaken a comprehensive Heritage Study, which identifies sites and provides recommendations for the future conservation of the Shire.

Residents should contact our Planning Department to find out how the Planning Scheme affects their land. Early discussion will confirm whether a permit is necessary and identify any other requirements.

Planning permit application forms and more information about the planning scheme, zones, overlays and permit fees are available on our website under the Planning and Building section.

Contact the Planning Department on **5593 7100** to discuss your proposal.

## BUILDING

The Building Department is responsible for the administration of the Building Act and Regulations to ensure works meet relevant building and safety standards for owners, occupiers and the general public.

If you intend to do some work around your house it is a good idea to check with Council to find out whether a building permit is required.

## BUILDING PERMITS

Permits are generally required for:

- alterations and additions to buildings
- antennas, masts, poles and chimneys on dwellings
- farm buildings
- fences and retaining walls
- garages and carports and their extensions
- garden sheds, outbuildings, gazebos
- new dwellings
- office partitions
- restumping, re-cladding and re-roofing
- swimming pools and spas
- the change of use of a building, shop or office
- verandahs and covered areas.

The Building Department offers a range of professional building permit services. Professional advice at the early design stage of any sized development is readily available and is advisable for the smooth completion of your project.

Our building services include:

- building permits
- permit services.

## PERMIT SERVICES

People seeking a building permit can use either Corangamite Shire's Building Department or a private consultant/building surveyor. Our service for residential and commercial building projects includes:

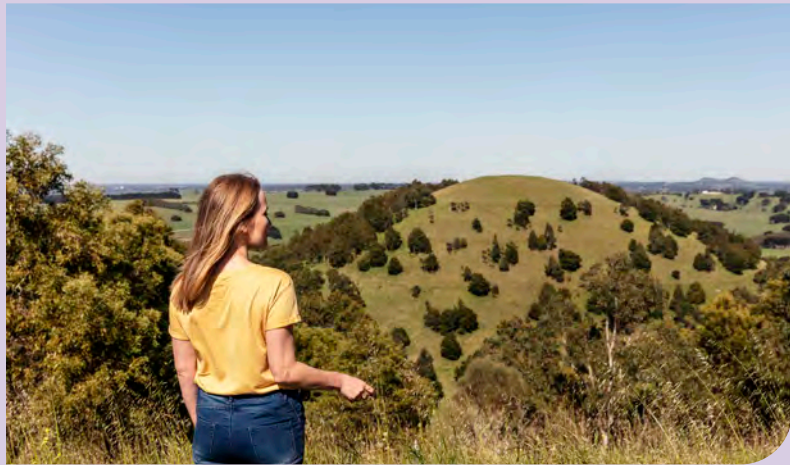
- advice on smoke alarm location
- advice on swimming pool fencing
- building advice
- building permits
- inspection and enforcement for compliance with building legislation
- occupancy permits
- report and consent under Section 29 of the Building Act 1993 for demolitions and other consents under the Building Regulations 2006.

Domestic Building permits are valid for two years only. The checklist below is a basic guide as to what is required to lodge a building permit application. Checklists for building sheds, swimming pools, verandahs and more are available on our website.

For advice on current application fees, please contact the Building Department on **5593 7100**.

## BUILDING PERMIT CHECKLIST FOR A NEW HOUSE

- Copy of property title.
- Completed Building Permit Application Form, including estimated cost of works and details of any building practitioner that you intend to engage.
- If completing the works as an owner-builder and estimated cost of works is \$16,000 or more, submit an owner-builder Certificate of Consent (application kits available from the Victorian Building Authority website [vba.vic.gov.au](http://vba.vic.gov.au))
- If a builder has been engaged and the estimated cost of works is \$16,000 or more, submit a copy of the builder's Warranty Insurance Certificate.
- Building plans and project specifications must include elevations, sections, and dimensions.
- Engineers' design drawings, computations and a site specific Certificate of Compliance.
- Site plan of the property clearly indicating proposed building and distances to property boundaries.
- Soil investigation report.
- Roof truss layout and design computations.
- Six-star energy rating certification and report.
- If land is unsewered, a Septic Permit to Install must be obtained from Council's Environmental Health Department.
- Stormwater drainage details, location of downpipes, water tanks and legal point of discharge.
- Bushfire assessment of the site and Bushfire Attack Level (BAL) determined.



## COMMUNITY CONTACTS

### PROGRESS ASSOCIATIONS

#### Advance Camperdown

advance.camperdown@gmail.com

#### Darlington Progress Association

trishandage@gmail.com

#### Derrinallum Progress Association

derrinallum.vic.au

#### Lismore Progress Association

lismore.vic.au

#### Progressing Cobden

cobden.org.au

#### Skipton Progress Association

skiptonaustralia.org

#### Timboon Action

timboonaction.com.au

#### Port Campbell Progress Association

Amanda Nash 0418 556 640

#### Terang & District Progress Association

Michael Reicha 5592 1758

#### Noorat & District Residents Association

FB- Noorat Resident's Association



## BUSINESS, INDUSTRY & TOURISM

The Corangamite Shire Economic Development team works with business, community and other levels of government to build vibrant local economies and sustainable communities.

### AREAS OF EXPERTISE

- advice and referrals
- statistical information
- tourism product development
- projects
- business training opportunities
- business networking opportunities
- assistance given to businesses to identify and access government funding
- visitor services via the Port Campbell Visitor Information Centre and Camperdown Visitor Centre
- event mentoring and support with event development and planning.

### SMALL BUSINESS SUPPORT

Are you thinking of starting or diversifying your business? The Economic Development team is your 'one-stop shop' for advice and support.

#### Workshops, seminars, training and mentoring

Tailored towards small business needs and run throughout the year.

#### Business Liaison Service

Advice in identifying business permits, with guidance and support through the application process

For more information visit [corangamite.vic.gov.au/business](http://corangamite.vic.gov.au/business) or phone **5593 7100**. Find Business Corangamite on Facebook.



## TOURISM

From the world-renowned Twelve Apostles in the south to Mt Elephant in the north, Corangamite Shire is blessed with natural features. For visitor information head to our official destination sites:

- [visit12apostles.com.au](http://visit12apostles.com.au)
- [volcaniclakesandplains.com.au](http://volcaniclakesandplains.com.au)

Or phone Port Campbell Visitor Information Centre on **1300 137 255**.

## GRANTS AND FUNDING

### Business Façade Improvement Program

A grant that offers \$1-for-\$1 funding up to \$3,000 for businesses in Shire townships to improve access and the appearance of their shopfronts.

### Small Business Assistance Program

A grant that offers \$1-for-\$1 funding up to \$5,000 for businesses in the Shire to innovate, adapt or diversify.

### Events and Festivals Program

Funding up to \$15,000 is available, made up of a maximum of \$10,000 grant funding and \$5,000 of in-kind support.

Refer to the grant program guidelines for detailed information via [corangamite.vic.gov.au/grants](http://corangamite.vic.gov.au/grants).

## EVENTS

Mentoring and support with the creation of new events, or the growth of existing events, including providing event management tools and templates, and advice on permits.

## BUSINESS GROUPS

### Twelve Apostles Tourism & Business Group

[contacttatbg@gmail.com](mailto:contacttatbg@gmail.com)

### Cobden Business Network

[cobdenbusinessnetwork.org.au](http://cobdenbusinessnetwork.org.au)



## RATES AND VALUATIONS

Please refer to our website to find out current rates and charges.

## WHY DO I PAY RATES?

Rate revenue helps fund community services and is collected from the owners of every property in our municipality. In setting rates we use property values to ensure an equitable distribution of charges.

## CALCULATING RATES

Corangamite Shire uses the Capital Improved Value (CIV) method to calculate rates. This is the total market value of the land, plus buildings and other improvements.

## MUNICIPAL CHARGE

In addition to general rates, a municipal charge is levied. This is a set amount charged on each property. This charge allows recovery of part of Council's administration costs.

## WASTE MANAGEMENT CHARGE

Council's Waste Management Charge covers the cost of kerbside collection of rubbish, an extended range of recyclables and green organics.

## LATE OR NON-PAYMENTS

If you have difficulty paying your rates by the due date, please contact Council on **5593 7100** for assistance.

## FIRE SERVICES PROPERTY LEVY

Council collects the Fire Services Property Levy (FSPL) on behalf of the State Government. The levy is calculated based on the capital improved value of a property, plus a fixed charge component.

The levy rate and fixed charge differs for residential, industrial, commercial, primary production (farming), vacant and public-benefit properties. These rates and charges are set by the state government.

## PAYING YOUR RATES

Rate notices are sent out in August each year and rates may be paid in full by 15 February or over four instalments.

You can pay your rates the following ways:

### Mail

Cheque or money order to Corangamite Shire, PO Box 84, Camperdown 3260

### In person

At any post office or the Corangamite Shire office, Civic Centre in Camperdown

### Telephone & Online

Billpay 13 18 16 (Billpay code: 0366) or BPay (Biller code: 5553). This includes payment by credit or debit card. You can pay online by credit card at [www.corangamite.vic.gov.au/Payments](http://www.corangamite.vic.gov.au/Payments).

## VALUATIONS

A valuation is an assessment of the market value of a property at a specific date.

## WHY ARE VALUATIONS IMPORTANT?

A general valuation establishes the market value of a property relative to all other properties including residential, commercial, industrial etc.

Revaluation is important for the property owner because it establishes a new value for the property, reflecting the current market, and therefore ensuring relativity as the values are used to determine individual property rates.

## VALUERS

Only professionally qualified valuers with practical experience perform municipal valuations. They operate under high ethical standards, and must declare their impartiality.

## OBJECTING TO A VALUATION

A person aggrieved by a valuation has two months to lodge an objection in writing through our rates office.

## ANNUAL BUDGET

Each year Council releases its draft budget for the upcoming financial year for public comment.

Residents can have their say on the draft budget before it is considered at and adopted.

To find out more, head to [www.corangamite.vic.gov.au/Budget](http://www.corangamite.vic.gov.au/Budget).

## RUBBISH, RECYCLING AND FOGO



## KERBSIDE BIN COLLECTION SERVICE

Residential households are provided with a 120L red-lidded bin for household waste, a 240L yellow-lidded bin for recycling and a 240L green-lidded bin for food organics and garden organics (FOGO). A kitchen caddy and roll of compostable bags are also supplied to each property with a kerbside collection. Compostable bags can be purchased at the Civic Centre or from Council Transfer Stations. Bins can be repaired when lids and wheels break. Please call the Civic Centre on **5593 7100** to organise any repairs or replacement.

## ORGANIC WASTE (FOGO)

Putting food organics into your green bin will save you money, reduce the cost of landfill fees and increase the life of our landfill. It also reduces greenhouse gas emissions produced at the landfill. All green waste and organics are composted at the landfill and used to rehabilitate the site.

## WASTE AVOIDANCE

Visit [reduce-recycle.com.au](http://reduce-recycle.com.au) and explore ways to reduce, reuse, repair and recycle goods to prevent them from entering landfill.

## WASTE COLLECTION

### Monday

Timboon, Simpson and Port Campbell

### Tuesday

Derrinallum, Lismore and Skipton

### Wednesday

Camperdown (north of Princes Highway) and Gnotuk

### Thursday

Camperdown (south of Princes Highway) and Cobden

### Friday

Terang, Noorat and Glenormiston

- Red-lidded bins are collected on a weekly basis.
- Yellow-lidded bins are collected fortnightly.
- Green-lidded bins are collected fortnightly between January and September, and weekly between October and December.
- Bins should be wheeled onto the nature strip by 8 pm the previous night. Remember to face the handles towards your property and ensure they are clear of trees and cars.
- You can download a waste calendar from our website or call us on **5593 7100** for a copy.

## TRANSFER STATIONS

There are transfer stations operating at Naroghid, Timboon, Simpson, Port Campbell, Derrinallum and Skipton. Patrons must ensure all loads are secure. Salvaging materials is not permitted. Liquid wastes, volatile, explosive or flammable substances, asbestos and medical/infected or prescribed waste materials will not be accepted.

### Transfer station opening times

(All facilities closed Christmas Day, Boxing Day, New Year's Day and Good Friday)

Corangamite Regional Landfill	Country Boundary Road West, Naroghid	Monday-Friday 7 am-4 pm; Saturday 10 am-4 pm; Sunday 10 am-3 pm
Derrinallum Transfer Station	Heards Road, Derrinallum	Friday and Sunday 1-5 pm
Port Campbell Transfer Station	McRae Street, Port Campbell	Tuesday and Thursday 1-3.30 pm; Sunday 10 am-1 pm
Simpson Transfer Station	Prinetown Road (2 km south of Simpson)	Tuesday and Thursday 1-3.30 pm; Sunday 10 am-1 pm
Skipton Transfer Station	Beaufort Road (2 km north of Skipton)	Every second Wednesday and Sunday 1-5 pm
Timboon Transfer Station	Timboon-Curdies River Road, Timboon	Wednesday and Friday 1-3.30 pm; Sunday 2-5 pm

## WHERE CAN I DISPOSE OF...

There are many items we use in our daily lives that cannot go in the kerbside rubbish collection. However, there are other means of recycling these items.

Agricultural chemicals	ChemClear provides safe collection and disposal of obsolete and unwanted chemicals. To dispose of chemicals, you can book a collection through the ChemClear hotline <b>1800 008 182</b> or <b>chemclear.com.au</b> . Fees may apply.
Agricultural chemical containers	drumMUSTER is the national program for the collection and recycling of agricultural chemical containers. drumMUSTER containers can be dropped off at Corangamite Regional Landfill and all transfer stations, except Port Campbell, for free. Council can only accept containers that carry the drumMUSTER logo, and that are clean, dry and free of chemical residue and have the lids removed. Metal drums must be pierced from top to bottom for draining and airing.
Asbestos	Not accepted at Corangamite Regional Landfill or any transfer station Must be safely disposed of at a licenced facility. Visit <b>asbestos.vic.gov.au</b> .
Household & car batteries	Car and household batteries can be recycled for free at the Corangamite Regional Landfill or one of the Council's transfer stations.
E-Waste	E-waste is any item that is powered by electricity with batteries or a cord and plug. Free drop off at all Council transfer stations
Gas cylinders	Drop off at Council transfer stations. Fees may apply.
Household chemicals	Sustainability Victoria holds free mobile drop-off collection events each year. They are open to all Victorian residents. Permanent collection points are also available at Cleanaway in Warrnambool, the Ballarat Transfer Station and Western Waste Management in Colac.
Light globes	Incandescent globes should be wrapped in newspaper and put in the red kerbside bin or taken to landfill. Fluorescent and compact fluorescent globes contain mercury and should be taken to Cleanaway in Warrnambool or Western Waste Management in Colac.
Medications	Old and unwanted medications can be returned to most pharmacies in Australia for safe disposal.
Printer cartridges	You can drop off your used or empty laser and inkjet cartridges at participating stores. More information via <b>recyclingnearyou.com.au</b> .
Sharps & needles	Council has free syringe disposal containers available to any person who needs them. Containers are available from the Civic Centre. Once a container is full, it can be returned to Council for disposal and replacement. The Victorian Needle and Syringe Program is provided by several pharmacies in Corangamite Shire.
Used tyres	Used tyres can be disposed of for recycling at the Corangamite Regional Landfill for a fee to be sent on to Tyrecycle ( <b>tyrecycle.com.au</b> ).
Used motor oil	Non-commercial quantities of used motor oil are accepted free of charge at all Corangamite waste facilities except the Skipton Transfer Station.
X-rays	Can be posted to Ecocycle Australia ( <b>ecocycle.com.au</b> ) or call <b>1300 326 292</b>



## ENVIRONMENT

Corangamite Shire's Environment Department coordinates a number of programs and initiatives aimed at preserving the natural environment and reducing the organisation's footprint.



### NATIVE VEGETATION

Native vegetation provides important habitat for native wildlife and contributes to healthy waterways and landscapes. Some of our native vegetation is unique to our region and cannot be found anywhere else in the world.

All native vegetation is protected by state and federal legislation, whether it be a grass, wildflower, orchid, shrub or tree. A planning permit is required to remove, destroy or lop native vegetation, including dead native vegetation (unless it meets one of the exemptions listed in the Corangamite Planning Scheme).

There are several exemptions where you may not need a planning permit to remove native vegetation from

your property. You should always check with Council first. There can be significant penalties for illegal removal of native vegetation.

### ENVIRONMENT SUPPORT GRANT

The Environment Support Grants Program offers up to \$2,500 (GST exclusive) matching funding to incorporated community groups, organisations and individuals, to undertake environmental and sustainability projects across Corangamite Shire. Applications usually open in April each year and close at the end of May. For more information visit [corangamite.vic.gov.au/grants](http://corangamite.vic.gov.au/grants).

### ROADSIDE WEED MANAGEMENT

Corangamite Shire is home to highly productive agricultural land and natural assets that are appreciated around the world.

However, the Shire has a major weed problem. Every year, Corangamite's weed control program targets noxious and environmental weeds along more than 1,500 km of Council-managed roadsides.

You can contact a member of our Environment Department on **5593 7100** to discuss or bring a problem area to Council's attention.

### VOLCANIC RESERVES

The Mt Leura and Mt Sugarloaf Reserves and Mt Noorat are dormant scoria cone volcanoes in the Shire. They afford sweeping 360-degree views across the countryside and are managed by Committees of Management.

Mt Leura and Mt Sugarloaf are located on the edge of Camperdown, accessed via Adeney Street and Mt Leura Road off the Princes Highway. Mt Noorat is accessed via Glenormiston Road and Morack Street in Noorat.

### LOCAL ENVIRONMENTAL GROUPS & GOVERNMENT AGENCIES

#### Heytesbury District Landcare Network

[heytesburylandcare.org.au](http://heytesburylandcare.org.au)  
[admin@heytesburylandcare.org.au](mailto:admin@heytesburylandcare.org.au)

#### Lismore Land Protection Group

[landcarevic.org.au](http://landcarevic.org.au)  
[llpg@westnet.com.au](mailto:llpg@westnet.com.au)

#### Mt Leura and Mt Sugarloaf Management Committee

[mtleura.org.au](http://mtleura.org.au)

#### Mt Elephant Community Management

[mountelephant.com.au](http://mountelephant.com.au)

#### Mt Noorat Management Committee

5593 7100

#### Corangamite Catchment Management Authority (CCMA)

[ccma.vic.gov.au](http://ccma.vic.gov.au)  
[info@ccma.vic.gov.au](mailto:info@ccma.vic.gov.au)

#### Glenelg Hopkins Catchment Management Authority (GHCMA)

[ghcma.vic.gov.au](http://ghcma.vic.gov.au)  
[ghcma@ghcma.vic.gov.au](mailto:ghcma@ghcma.vic.gov.au)

#### Department of Environment, Land, Water and Planning - DELWP

[delwp.vic.gov.au](http://delwp.vic.gov.au)  
13 61 86

#### Parks Victoria

[parkweb.vic.gov.au](http://parkweb.vic.gov.au)  
13 19 63

**A**

About Corangamite  
 After Kindergarten and After School Care  
 Animals  
 Annual Budget  
 Are You Prepared?  
 Areas of Expertise  
 Arterial Roads  
 Arts, Culture & Recreation  
 Australia Day Awards

**B**

Building  
 Building and Planning  
 Building Permit Checklist For a New House  
 Building Permits  
 Bushfire Places of Last Resort  
 Business Façade Improvement Program  
 Business Groups  
 Business, Industry and Tourism

**C**

Calculating Rates  
 Child Care Services  
 Citizenship Ceremonies  
 Cleaning Up After Your Dog  
 Community Centres  
 Community Contacts  
 Community Grants Programs  
 Community Transport  
 Contacting Us  
 Corangamite Shire Planning Scheme  
 Corporate Structure  
 Council

**C**

Council Awards  
 Council Grants  
 Council Managed Roads, Footpaths and Drainage  
 Council Meetings

**D**

Dead Animal Removal  
 Disability Parking  
 Discount Microchipping  
 Domestic Assistance  
 Drainage

**E**

Elections  
 Environment  
 Environment Support Grant  
 Environment Support Grants Program  
 Essential Numbers  
 Events  
 Events & Festivals Grants Program  
 Explore Corangamite  
 Emergency

**F**

Facility Grants Program  
 Family & Children's Services  
 Family Day Care  
 Festivals and Events  
 Fire Danger Period (FDP)  
 Fire Hazards  
 Fire Prevention and Planning  
 Fire Services Property Levy  
 Food Safety  
 Freeza

**G**

Get Involved  
 Grants and Funding

**H**

Halls  
 Health Protection  
 Heritage Planning  
 Home Maintenance  
 Hygiene Standards

**I**

Immunisations  
 Information About Our Services  
 Injured Animals

**K**

Kerbside Bin Collection Service  
 Kindergartens

**L**

Late or Non-Payments  
 Libraries  
 Limits on The Number of Animals  
 Local Environmental Groups & Government Agencies  
 Local Laws and Animal Control  
 Lost and Found

**M**

Maternal and Child Health Centres  
 Meeting Agendas  
 Mobile Child Care  
 Municipal Charges

**N**

National Disability Insurance Scheme (NDIS)  
 Native Vegetation  
 Need to Hire a Venue?  
 Noise

**O**

Objecting To a Valuation  
 Open-Air Burning  
 Open Forums  
 Organic Waste (FOGO)  
 Our People  
 Our Website  
 Outside The FDP  
 Overlays

**P**

Paying Your Rates  
 Permit Services  
 Permits  
 Personal Alarms  
 Personal Care  
 Pet Registration  
 Planned Activity Groups  
 Planning  
 Planning Permit Process  
 Planning Scheme Map  
 Playgrounds  
 Playgroups  
 Pollution  
 Positive Ageing and Inclusion  
 Presentations to Council  
 Progress Associations  
 Public Health

## Q

Quick Response Grants

## R

Rates and Valuations

Regional Roads Victoria (RRV)  
Managed Roads and Highways

Report a Problem or Make a Request

Residential Streets

Respite Care

Restricted Breeds of Dogs

Road Signs

Road, Footpath or Drainage Request

Roadside Weed Management

RRV Managed Highways

Rubbish, Recycling and FOGO

## S

School Holiday Programs

Selling Food at Community Events

Senior Citizens Centres

Seniors Week

Shire Map

Small Business Assistance Program

Small Business Support

Social Media

Sporting Centres

Stock on Roads

Street Sweeping

Support Services

Swimming Pools

## T

Theatre Royal Camperdown

Total Fire Bans

Tourism

Transfer Stations

## U

Useful Contacts

## V

Valuations

Valuers

Volcanic Reserves

## W

Walking your Dog

Waste Avoidance

Waste Collection

Waste Management Charge

Wastewater Disposal (Septic Tanks)

Welcome to Corangamite Shire

Where Can I Dispose Of...

Why Are Valuations Important?

Why Do I Pay Rates?

## Y

YAK

Young People

Youth Achievement Awards

Youth Council

Youth Fest

## Z

Zone Requirements

## FOR MORE INFORMATION

Corangamite Shire, 181 Manifold Street,  
Camperdown, 3260

## OFFICE HOURS

8.30 am to 5 pm Monday-Friday  
(except public holidays)

## PHONE

03 5593 7100

## EMAIL

shire@corangamite.vic.gov.au

**CORANGAMITE.VIC.GOV.AU**



SKIPTON  
GARAGE

GENERAL  
SERVICING  
& ALL  
MECHANICAL  
REPAIRS

