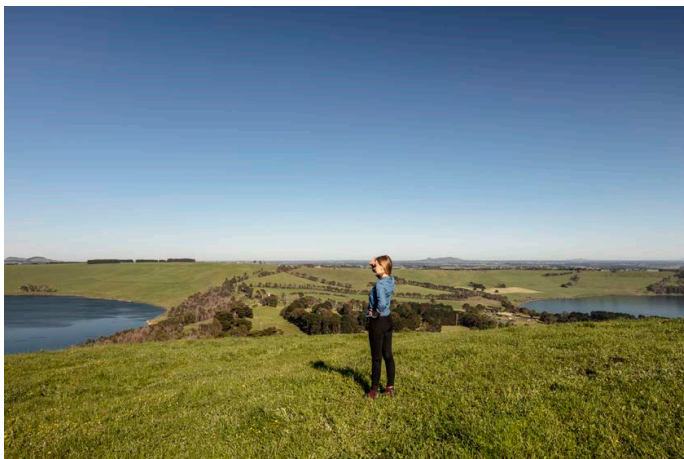


**20  
40**  
Community  
Vision

# **CORANGAMITE COMMUNITY VISION**

REPORT OF THE CITIZENS JURY

MAY 2021



# CONTENTS

---

Acknowledgement of Country	4/7
Corangamite snapshot	7/9
The process	10/11
Guiding principles	12/13
Community vision	14/15
Theme one: Future proofing	16/19
Theme two: People	20/23
Theme three: Liveability and lifestyle	24/27
Theme four: Prosperity and innovation	28/31

---

# ACKNOWLEDGMENT OF COUNTRY

---

**WE THE MEMBERS OF THE CITIZENS  
JURY ARE INSPIRED BY THE WISDOM AND  
GENEROSITY OF OUR FIRST NATIONS  
BROTHERS AND SISTERS.**

**WE HAVE WELCOMED THE OPPORTUNITY  
TO READ THE EASTERN MAAR AND  
WADAWURRUNG COUNTRY PLANS, TO  
IMPROVE OUR UNDERSTANDING, AND TO  
EMBRACE THE PRINCIPLE AND THE SPIRIT  
OF 'LET'S WALK TOGETHER' AND 'NO-ONE  
LEFT BEHIND'.**



We acknowledge the traditional owners of the land, the Eastern Maar and Wadawurrung.


We recognise their continuing connection to land, waterways, culture and community dating back tens of thousands of years.

We pay our respect to their ancestors and to Elders, past, present and emerging. We pay respect to their language and cultural traditions, beliefs and values.

We extend this respect to all Aboriginal and Torres Strait Islander people recognising the importance of reconciliation.

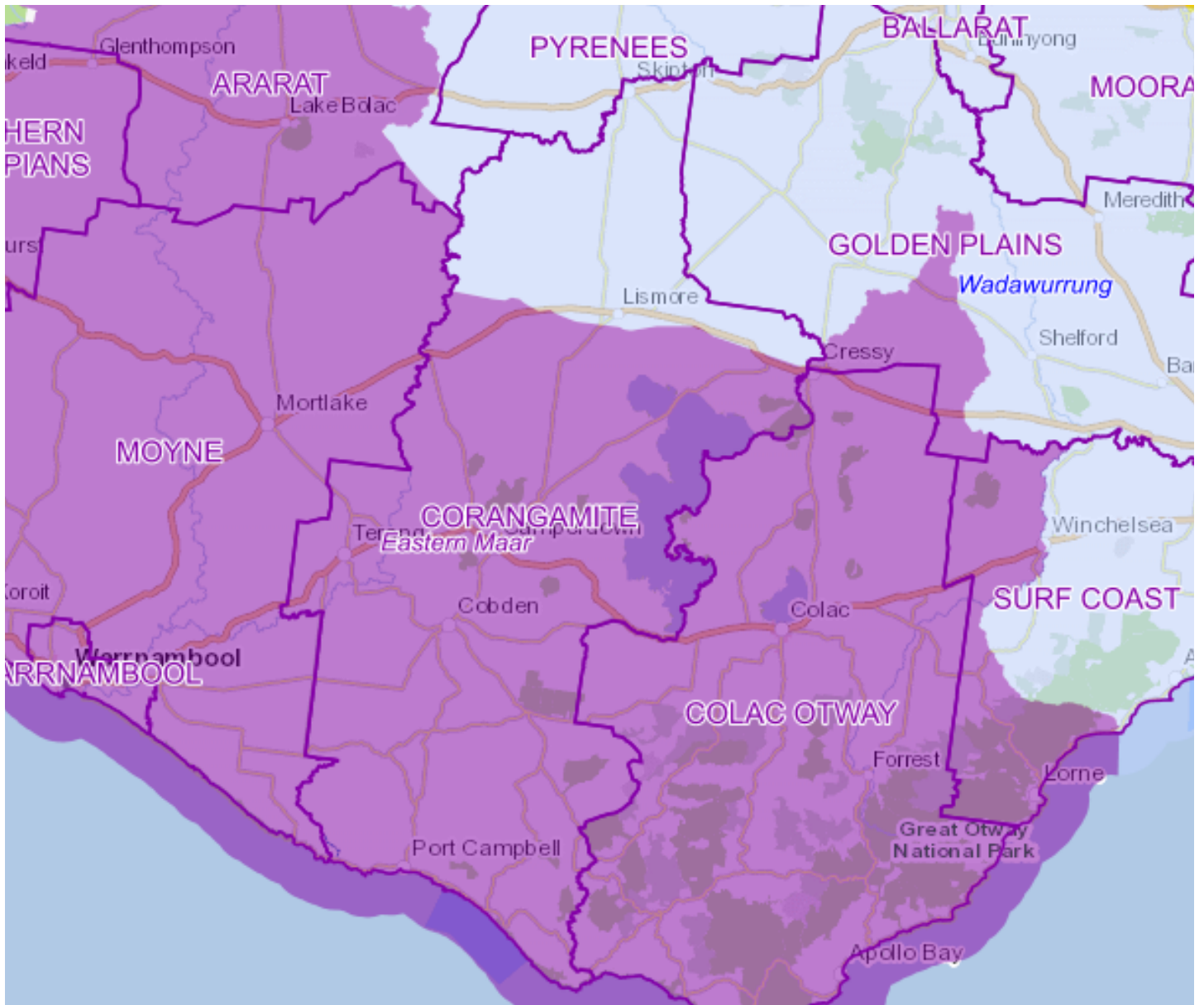
We seek to move forward together with greater knowledge, with inclusion, and respecting a shared history.



 Wadawurrung Country

 Eastern Maar Country

Map by Aboriginal Victoria, 7 May 2021



***Pangmaar ngootapana weeng***

**No-one left behind**

*(Meerreengeeye ngakeepoorryeet*  
Eastern Marr Country Plan, 2015)

***Koling wada-ngal***

**Let's walk together**

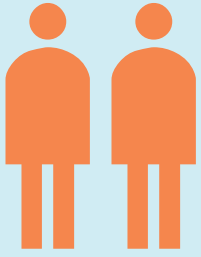
*(Paleert Tjaara Dja*  
Wadawurrung Country Plan, 2020)



# CORANGAMITE SNAPSHOT

---





## OUR POPULATION



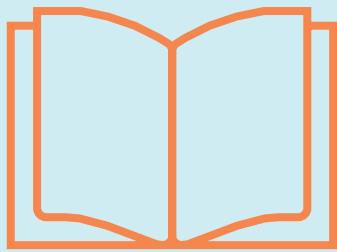
1.7%  
population drop  
between 2011 and  
2016

46

median age



2%  
expected growth  
between now and  
2036



## OUR EDUCATION AND EMPLOYMENT

25.3%

of households earn less than  
\$650 per week

35.5%

of households earn more than  
\$1,250 per week

2%

unemployment rate

32.5%

of people aged over 15  
completed Year 12 or equivalent

53.2%

of people have a Certificate  
level or above qualification

43%

of people have no qualifications

Of the 7,034 people who work in Corangamite Shire, 83.4% also live in the area.



## HOW WE LIVE



Roughly half of our  
population lives in  
our 12 towns, while  
the other half lives  
rurally.



25%

families with children



28.5%

couples with no children



8.6%

single parent families



27.8%

group households



2%

live alone



## OUR CULTURE AND CREATIVITY

6.3%

born overseas compared with 11% in regional Victoria

29.1%

of households earn more than \$1,250 per week

0.9%

unemployment rate



## OUR ECONOMY

\$2.424 BILLION  
annual economic output

\$1.155 BILLION  
Corangamite's Gross Regional Product (GRP)

\$695.85 MILLION  
estimated output from Corangamite's largest generating sector, Agriculture, Forestry and Fishing



## OUR HEALTH

43%

rate their health as good to excellent

9.5%

Prevalence of heart disease per 1,000.

21.6%

Registered mental health clients per 1,000

653

Home and Community Care clients aged 70+ - per 1,000 target population

# THE PROCESS

---

The Corangamite Shire Community Vision 2040 aims to capture the hopes and aspirations of the Corangamite community in planning for a bright future for all living beings.



A key component of developing the Vision was the formation of a dedicated community assembly. This was done via an open Expression of Interest process. Between March and May 2021, between 18 and 33 residents from different areas across the Shire participated in the online Zoom forums.

The community was encouraged to send submissions of their preferred vision of 2040. We, the citizens assembly, undertook engagement training and co-design workshops. We reviewed the community submissions to the Corangamite Shire about what they want and need within the Shire, highlighting what was important to each. Very quickly we could see that the majority of our visions for the future intertwined. It was pleasing to see how our community could work together towards a common goal.

With assistance from the consultancy Liminal by Design, our panel was able to source almost any

information we requested. This aided us to be better informed on many areas of expertise with documentation, relevant websites, and presenters. We analysed data and endeavoured to make better informed decisions about 2040 Vision priorities. We heard from the following speakers:

- Sam Fox from Council, Population and REPLAN
- Garry Moorfield from Council, Community Planning
- David Rae from Council, Snapshot document
- John Sherwood, Deakin on the climate emergency and biodiversity crisis
- Simon Kustenmacher, on demographic projections and trends
- Jorja Sharp, a young woman who grew up in the Shire who is now studying at university and building her life in the Shire.
- Vicky Couzens, indigenous perspective

# GUIDING PRINCIPLES

---

Above all, the environmental challenges need to be front of mind in all decisions we face. In restoration and regeneration of ecosystems, we need to be guided by the wisdoms of indigenous people. There is a need to preserve the better things from the past so as to achieve the vision of the future.



## **POLICY**

There is a need to drive these themes in a vibrant manner.

## **CONSULTATION**

Well-governed and engagement of community.

## **QUALITY**

What is delivered meets the expectations and satisfaction of the community.

## **EQUALITY AND EQUITY**

Every group and individual in the Shire is represented and considered.

## **MEASUREMENTS**

Every citizen is entitled to participate in the successes of Vision 2040.

## **PUBLIC POLICY**

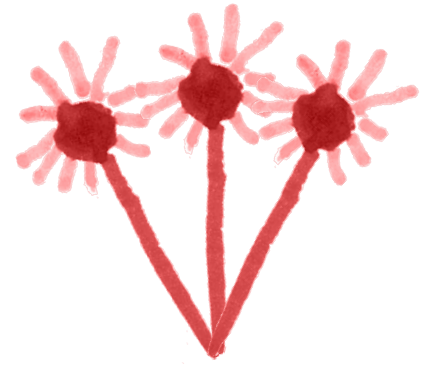
- In 2040 all public policy relating to Corangamite Shire is developed and implemented in a timely manner to meet the needs of every resident without fear or favour.
- In 2040 continuing consultative processes are in place to ensure that policy and decision makers are fully, regularly and accurately informed of changing needs throughout Corangamite Shire.
- In 2040 all publicly funded and managed cultural, leisure and recreational facilities in Corangamite Shire are consistently excellent in every respect. They will continue to exceed the expectations of Corangamite Shire residents and frequently set new benchmarks.
- In 2040 every Corangamite Shire resident is able to access, share and enjoy publicly funded and managed cultural, leisure and recreational facilities, regardless of age, gender, race or other personal differences.
- In 2040 all decisions ensure the prosperity, interconnectedness, sustainability, governance and engagement of the community including First Nations people.



# COMMUNITY VISION

---

OUR HERITAGE FROM THE FIRST NATIONS THROUGH TO THE PRESENT DAY CONTINUES TO BE RESPECTED, PRESERVED AND PROMOTED. WE ARE INNOVATIVE AND PROACTIVE IN ALL ASPECTS OF FUTURE PLANNING. A FLOURISHING, HEALTHY ENVIRONMENT IS CRITICAL TO THE WELLBEING OF OUR SHIRE. ALL CORANGAMITE COMMUNITIES ARE THRIVING, HEALTHY, FULLY INTERCONNECTED AND EQUITABLY TREATED. IN JOURNEYING TOGETHER FOR THE BETTERMENT OF CORANGAMITE, COMMUNITY ENGAGEMENT IS A VITAL PART OF COMMUNITY AND COUNCIL GOVERNANCE.



To offer further visionary guidance four interconnected themes have been identified which serve as a focus to guide Corangamite Shire's plans for the future to 2040:

**Theme one:**

## FUTURE PROOFING

Adaptation and mitigation activities aimed at maintaining equitable life quality for all in the face of climate change.

**Theme two:**

## PEOPLE

Our community would like to see adequate living standards for all people via access to health, education, housing, relationships, transport and economic services to support our health and wellbeing.

**Theme three:**

## LIVEABILITY & LIFESTYLE

We need to ensure we have the facilities as per the needs of the various community groups within the local communities. We need continued council support to integrate and embrace our communities.

**Theme four:**

## PROSPERITY & INNOVATION

Prosperity is not just money or wealth but the creation and maintenance of strong, supported communities and quality of life. Everyone is included and no-one is left behind. Compassion and respect everywhere. Opportunity for everyone to undertake meaningful employment or volunteer. Opportunity to undertake challenging and extended education. Wellbeing and 'happiness' across all human needs.

# THEME ONE

---

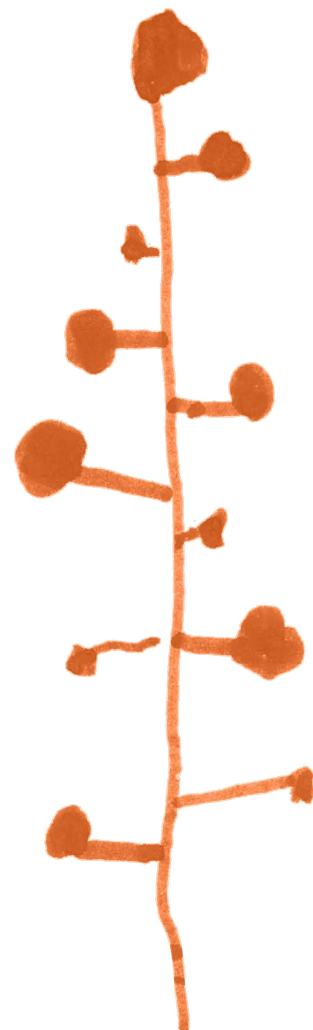
## FUTURE PROOFING (SUSTAINABLE ENVIRONMENT)

ADAPTATION AND MITIGATION ACTIVITIES  
AIMED AT MAINTAINING EQUITABLE LIFE  
QUALITY FOR ALL IN THE FACE OF CLIMATE  
CHANGE.

We have the opportunity to put in place measures that will effectively help to adapt and mitigate the effects of climate emergency. We also have the opportunity to ameliorate adverse human activity that has negative impacts on soil and water and biodiversity.

## OBJECTIVES

- Create a climate emergency director and department within the Shire structure.
- Foster climate emergency community reference group and industry specific groups.
- Identify risk industries, populations (geographic and demographic), environmental habitats and species and instil mitigation and adaptation strategies to enable resilience.
- Communicate and collaborate successful strategies with other municipalities.
- Enable ongoing risk identification and adapt strategies as required.
- We want to see council supporting all business and landowners who undertake mitigation and adaptation practises.





“THE IMPACT OF CLIMATE CHANGE ON THE AGRICULTURAL INDUSTRY WILL DEMAND DRAMATIC ADAPTATION WITHIN THE INDUSTRY.”

“COMMUNITIES WILL EXPERIENCE ADDITIONAL RESOURCE AVAILABILITY PRESSURE.”

“ABILITY TO RESPOND AND ENSURE SAFETY IN THE EVENT OF NATURAL DISASTERS AND EXTREME WEATHER EVENTS, AND, ENSURE RECOVERY.”

“A RISE IN OCEAN LEVELS AND ACTIVITY WILL EXACERBATE COASTAL EROSION.”

“EXTREME WEATHER IS MORE LIKELY.”

## WHAT OUR CHILDREN WANT

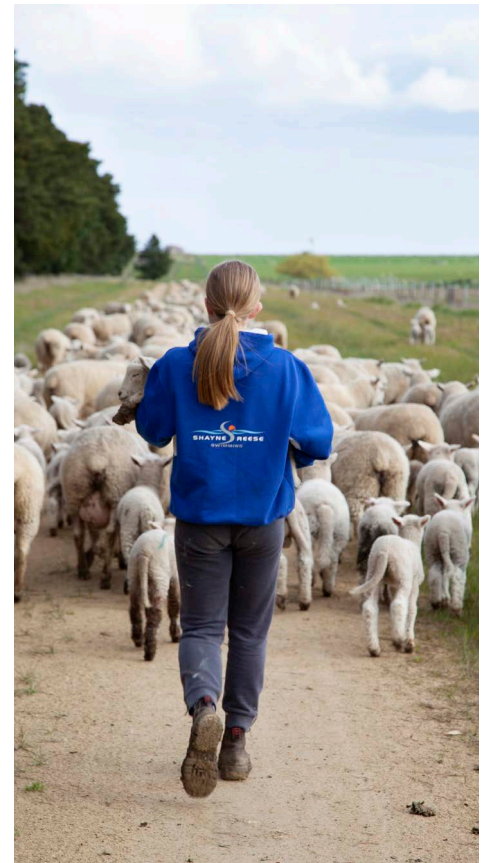
A maintained safe and secure lifestyle, healthy environment, (space, plants and animals) that they can be involved in and learn from.



## MEASURES OF SUCCESS

Develop demonstrative measures indicating current statistics in 2020 and desired future changes by 2040.

- GREEN SPACES
- REFORESTATION OF PUBLIC AREAS AND TREE PLANTING
- BIOLINKS AND CORRIDORS BETWEEN GREEN SPACES AND REFORESTATION.
- WATER QUALITY AND LEVELS IN LAKES AND STREAM FLOWS
- ENDANGERED FLORA AND FAUNA AND BIODIVERSITY MEASURES
- CARBON SEQUESTRATION AND GREENHOUSE GAS EMISSIONS
- ENERGY USE IN SHIRE.



# THEME TWO

---

## PEOPLE

“PANGMAAR NGOOTAPANA WEENG”  
- NO-ONE LEFT BEHIND

OUR COMMUNITY WOULD LIKE TO SEE  
ADEQUATE LIVING STANDARDS FOR  
ALL PEOPLE VIA ACCESS TO HEALTH,  
EDUCATION, HOUSING, RELATIONSHIPS,  
TRANSPORT AND ECONOMIC SERVICES TO  
SUPPORT OUR HEALTH AND WELLBEING.

Our health care network requires greater access and diversity in the range of services available, so all citizens can be treated locally.

There is also a need more and improved aged care centres.

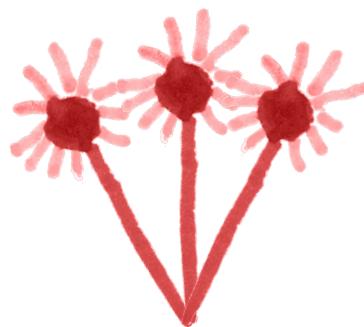
There is insufficient public transportation.

There is a shortage of housing particularly with respect to lower socio economic and prospective residents within the shire.

Existing educational connections between schools and workplaces are currently beneficial.

## OBJECTIVES

- Facilities and programs for the various community groups eg. senior centres and youth centres to keep the community engaged and promote community wellbeing.
- Elimination of the digital divide by ensuring our communities have adequate access to digital communications, technology, internet and training.
- Continued improvement of shire roads and ongoing advocacy for improvement to State roads.
- Defined strategies to attract an increase in population at a sustainable level, with the appropriate supporting infrastructure.
- Retaining our youth with more workplace experience opportunities and education within the Shire.
- Further research and action of why people leave and how to develop a more culturally diverse community.
- More funding and support for volunteers.
- A better public transport system covering all towns within our communities and to neighbouring shires.



“JOINTLY INVESTIGATE MODELS OF EDUCATION BEST SUITED FOR THIS REGION BY 2040. HOW CAN SKILLED PEOPLE BE ATTRACTED TO THE AREA?”

“STRATEGICALLY PLAN FOR THE INCREASED DEMAND FOR AGED CARE TO ENSURE RESIDENTS CAN STAY IN THEIR LOCAL COMMUNITY.”

“WE’RE ALSO LUCKY TO BE LIVING IN A LOCATION THAT PUTS US WITHIN REACH OF MANY SERVICES IN THE LARGER REGIONAL TOWNS (WOULD BE GREAT TO BUILD ON THE PUBLIC TRANSPORT NETWORK BOTH WITHIN THE SHIRE AND CONNECTING TO OTHER REGIONS).”









# THEME THREE

---

LIVEABILITY AND LIFESTYLE

We need to ensure we have the facilities as per the needs of the various community groups within the local communities.

We need continued council support to integrate and embrace our communities.

## OBJECTIVES

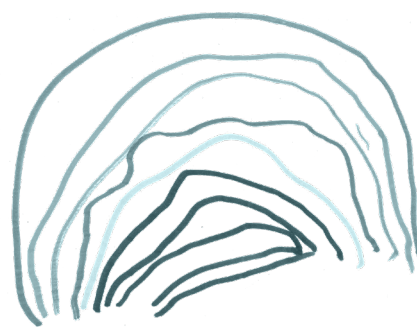
- Council support to increase all-abilities access to all spaces.
- An improvement in the management of problematic roadside vegetation.
- Council to support the improved knowledge of Corangamite Shire's shared history.
- Programs and events to connect communities through continued support and funding of arts and culture programmes for all ages of the Shire.
- Maintenance and greater enhancement of local natural features such as lakes, mountains, rivers and natural reserves and practical support for their volunteer committee of Management.
- Continued improvement to pedestrian access throughout the Shire
- Strengthen community wellbeing through promoting connectivity between and within communities, including a neighbour support program.
- Better incorporation of community views.



**“WOULD LIKE TO SEE A MUCH STRONGER ACKNOWLEDGEMENT OF OUR INDIGENOUS HISTORY, MARITIME HISTORY AND SETTLER HISTORY. RECOGNITION AND COMMON UNDERSTANDING OF OUR HISTORIES CONTRIBUTES TO A STRONGER, MORE COHESIVE COMMUNITY.”**

**“DON’T LOSE THE SMALL TOWN CHARM.”**

**“YOU MUST AIM TO RESTORE AS MUCH NATIVE VEGETATION IN CORANGAMITE AS POSSIBLE OVER THE NEXT 21 YEARS. LOOK AT THE SUCCESS OF MOUNT LEURA. PLEASE REPEAT ON ROADSIDE VERGES, MOUNTAINS, VALLEYS, LAKES...”**



## WHAT OUR CHILDREN WANT

The children of the community want to enjoy their families, friends, recreational activities, wildlife and Corangamite’s natural beauties.





# THEME FOUR

---

## PROSPERITY AND INNOVATION

PROSPERITY IS NOT JUST MONEY OR WEALTH BUT THE CREATION AND MAINTENANCE OF STRONG, SUPPORTED COMMUNITIES AND QUALITY OF LIFE. EVERYONE IS INCLUDED AND NO-ONE IS LEFT BEHIND. COMPASSION AND RESPECT EVERYWHERE.

OPPORTUNITY FOR EVERYONE TO UNDERTAKE MEANINGFUL EMPLOYMENT OR VOLUNTEER. OPPORTUNITY TO UNDERTAKE CHALLENGING AND EXTENDED EDUCATION WELLBEING AND 'HAPPINESS' ACROSS ALL HUMAN NEEDS.



Closed shops in our smaller towns especially.  
People are moving elsewhere for job opportunities and education.  
Community services and facilities are key to maintaining population in  
small towns.

## OBJECTIVES

- More money circulating in Shire's economy will drive better local employment and business opportunities. Local businesses are key to our prosperity.
- Arts, culture, creative industries, education - not just technology - drive innovation and prosperity.
- Promote community planning and budgeting processes to get greater engagement so that communities are aware of its importance.
- Creating reasons for people to visit and explore our towns. This could be in the form of festivals and events, infrastructure such as walking tracks and playgrounds. More help and resources for community volunteers, including organisational support. Scope for Shire to play a role in organisational support
- A resilient economy for the long term depends on appropriate infrastructure such as renewable energy and electric vehicle charging stations as well as attracting future climate relevant industries to the Shire.
- Innovation is adaptation to incremental changes as well as radical new development. People identifying opportunities and have freedom and incentive to explore them. Role of the Shire could be to remove barriers to this.
- Recognition of importance of smaller and family owned farms for local community prosperity and sustainable production of food and fibre.





“USE INNOVATIVE TOOLS  
TO ENSURE APPROPRIATE  
ECONOMIC WELL-BEING  
AND THE MAINTENANCE OF  
POPULATION ‘HAPPINESS’  
LEVELS.”

“THAT ALL TOWNS IN  
THE SHIRE, SHARE  
EQUALLY IN THE SHIRE’S  
PROSPERITY AND  
OPPORTUNITY.”

“BUILD IT AND  
THEY WILL COME.  
THINK BIG.”



