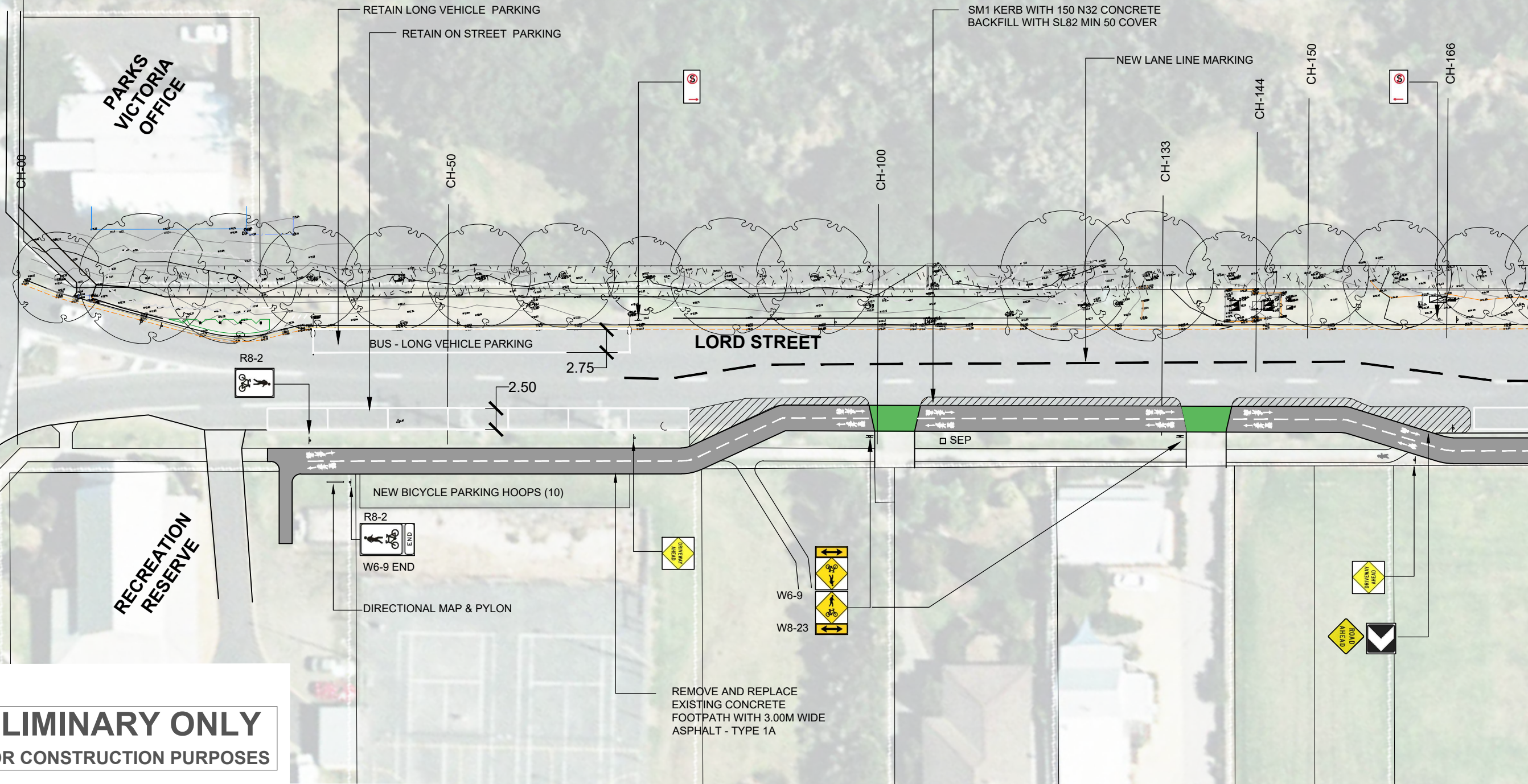


MORRIS STREET

PARKS VICTORIA OFFICE



**WARNING**

BEWARE OF UNDERGROUND SERVICES  
THE LOCATION OF UNDERGROUND SERVICES SHOWN ARE APPROXIMATE ONLY AND THEIR EXACT POSITION SHOULD BE PROVED ON SITE. NO GUARANTEE IS GIVEN THAT ALL SERVICES ARE SHOWN. THE CONTRACTOR MUST VERIFY ALL SERVICES ON SITE PRIOR TO ANY EXCAVATION WORK.

**PRELIMINARY ONLY**  
**NOT FOR CONSTRUCTION PURPOSES**

**DRAWING KEY**

- UNSEALED PATH TYPES (REFER DWG 12AT- P1 - P2)**
- TYPE 1A 2.5m WIDE UNSEALED PATH - NO EDGING
  - TYPE 1B 2.5m WIDE UNSEALED PATH - WITH GEOFABRIC
  - TYPE 1C WIDEN - TOP DRESS EXISTING PATH/ DRIVEWAY TO 2.5m
- DRAINAGE (REFER DWG 12AT- D1)**
- 900 x 600 GRATED CATCH PIT (IDM.....)
  - DN300 CLASS 3 R/RJ RCP (IDM.....)
  - CONCRETE HEADWALL (IDM.....)
  - DRIVEABLE CONCRETE HEADWALL (IDM.....)
  - TABLE DRAIN (MIN 1.0m WIDE MIN 150 DEEP)

- ASPHALT PATH TYPES (REFER DWG 12AT - A1 - A3)**
- TYPE 3A 2.5m WIDE ASPHALT PATH - NO HANDRAIL
  - TYPE 3B 3.0m WIDE ASPHALT PATH - TIMBER HANDRAIL TO ONE SIDE
  - TYPE 3C 3.0m WIDE ASPHALT PATH - WITH RETAINING EDGE AND HAND RAIL TO ONE SIDE
  - TYPE 3D 3.0m WIDE ASPHALT PATH - WITH GAL MS RETAINING WALL NO HANDRAIL
- FENCING TYPES (REFER DWG 12AT - F1)**
- TYPE A POST AND WIRE
  - TYPE B POST AND RAIL (FRANGIBLE WITH REFLECTORS)
  - TYPE C VEHICLE BARRIER - INCLUDING TERMINATIONS
  - TYPE D WHITE ROADSIDE BOLLARD (FRANGIBLE WITH REFLECTORS)
  - TYPE E HIGH VIS YELLOW BOLLARD

- ELEVATED BOARDWALK TYPES (REFER DWG 12AT - B1 - B3)**
- TYPE 4A STEEL SUBFLOOR AND HANDRAIL - ONE SIDE (3.0m SPAN)
  - TYPE 4B STEEL SUBFLOOR AND HANDRAIL - BOTH SIDES (UP TO 11.0m SPAN)
  - TYPE 4C STEEL SUBFLOOR AND HANDRAIL - ONE SIDE (3.0m SPAN)
  - TYPE 4D CANTILEVERED STEEL FLOOR WITH TIMBER LOOKOUT RAIL - ONE SIDE
  - TYPE 4E TIMBER BOARDWALK WITH HANDRAIL TO ONE SIDE
- SIGNAGE**
- EXISTING SIGN
  - D1 DIRECTIONAL SIGN BOARD
  - B1 MAIN SIGN WITH MAP
  - NEW REGULATORY SIGN

DATE	REV	AMENDMENT
21.05.20	B	DRAFT - SITE COMMENTS 18.5.20
11.05.20	A	DRAFT FUNCTIONAL DESIGN



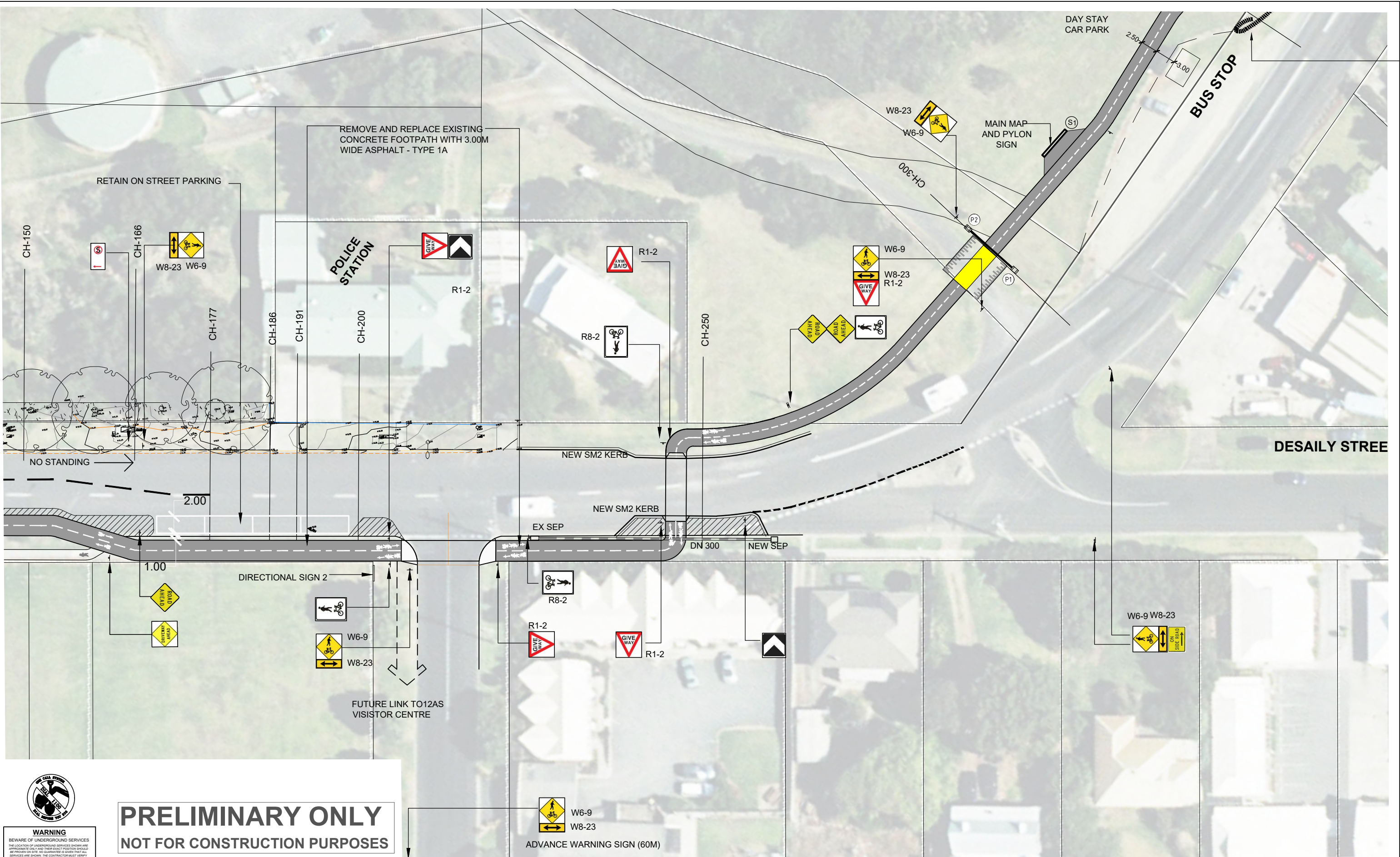
**CLIENT**

**PROJECT TITLE**  
TWELVE APOSTLES TRAIL - TIMBOON TO PORT CAMPBELL DETAILED DESIGN

**DRAWING NAME**  
OPTION 1 ON ROAD CYCLE LANE MORRIS ST - LORD ST PORT CAMPBELL CH-00 TO CH-166

**SCALE BAR**  
0 2.5 5 7.5 12.5m

SCALE 1:500 @ A3  
DATE MAY 2020  
DRAWN KN  
DESIGN TBLD  
CHECKED MB  
DATUM MGA-54  
DWG No. 12AT-02AA  
ACAD REF: SHEET 02



**PRELIMINARY ONLY**  
**NOT FOR CONSTRUCTION PURPOSES**

**WARNING**  
 BEWARE OF UNDERGROUND SERVICES  
 THE LOCATION OF UNDERGROUND SERVICES SHOWN ARE APPROXIMATE ONLY AND THEIR EXACT POSITION SHOULD BE PROVEN ON SITE. NO GUARANTEE IS GIVEN THAT ALL SERVICES ARE SHOWN. THE CONTRACTOR MUST VERIFY ALL SERVICES ON SITE PRIOR TO ANY EXCAVATION WORK.

- DRAWING KEY**
- UNSEALED PATH TYPES (REFER DWG 12AT - P1 - P2)**
- TYPE 1A 2.5m WIDE UNSEALED PATH - NO EDGING
  - TYPE 1B 2.5m WIDE UNSEALED PATH - WITH GEOFABRIC
  - TYPE 1C WIDEN - TOP DRESS EXISTING PATH/ DRIVEWAY TO 2.5m
- DRAINAGE (REFER DWG 12AT - D1)**
- 900 x 600 GRATED CATCH PIT (IDM.....)
  - DN300 CLASS 3 RRJ RCP (IDM.....)
  - CONCRETE HEADWALL (IDM.....)
  - DRIVEABLE CONCRETE HEADWALL (IDM.....)
  - TABLE DRAIN (MIN 1.0m WIDE MIN 150 DEEP)

- ASPHALT PATH TYPES (REFER DWG 12AT - A1 - A3)**
- TYPE 3A 2.5m WIDE ASPHALT PATH - NO HANDRAIL
  - TYPE 3B 3.0m WIDE ASPHALT PATH - TIMBER HANDRAIL TO ONE SIDE
  - TYPE 3C 3.0m WIDE ASPHALT PATH - WITH RETAINING EDGE AND HAND RAIL TO ONE SIDE
  - TYPE 3D 3.0m WIDE ASPHALT PATH - WITH GAL MS RETAINING WALL NO HANDRAIL
- FENCING TYPES (REFER DWG 12AT - F1)**
- TYPE A POST AND WIRE
  - TYPE B POST AND RAIL (FRANGIBLE WITH REFLECTORS)
  - TYPE C VEHICLE BARRIER - INCLUDING TERMINATIONS
  - TYPE D WHITE ROADSIDE BOLLARD (FRANGIBLE WITH REFLECTORS)
  - TYPE E HIGH VIS YELLOW BOLLARD

- ELEVATED BOARDWALK TYPES (REFER DWG 12AT - B1 - B3)**
- TYPE 4A STEEL SUBFLOOR AND HANDRAIL - ONE SIDE (3.0m SPAN)
  - TYPE 4B STEEL SUBFLOOR AND HANDRAIL - BOTH SIDES (UP TO 11.0m SPAN)
  - TYPE 4C STEEL SUBFLOOR AND HANDRAIL - ONE SIDE (3.0m SPAN)
  - TYPE 4D CANTILEVERED STEEL FLOOR WITH TIMBER LOOKOUT RAIL - ONE SIDE
  - TYPE 4E TIMBER BOARDWALK WITH HANDRAIL TO ONE SIDE
- SIGNAGE**
- EXISTING SIGN
  - D1 DIRECTIONAL SIGN BOARD
  - D11 DIRECTIONAL SIGN BOARD
  - B1 MAIN SIGN WITH MAP
  - NEW REGULATORY SIGN

DATE	REV	AMENDMENT
21.05.20	B	DRAFT - SITE COMMENTS 18.5.20
11.05.20	A	DRAFT FUNCTIONAL DESIGN

CLIENT  
  
**CORANGAMITE SHIRE**

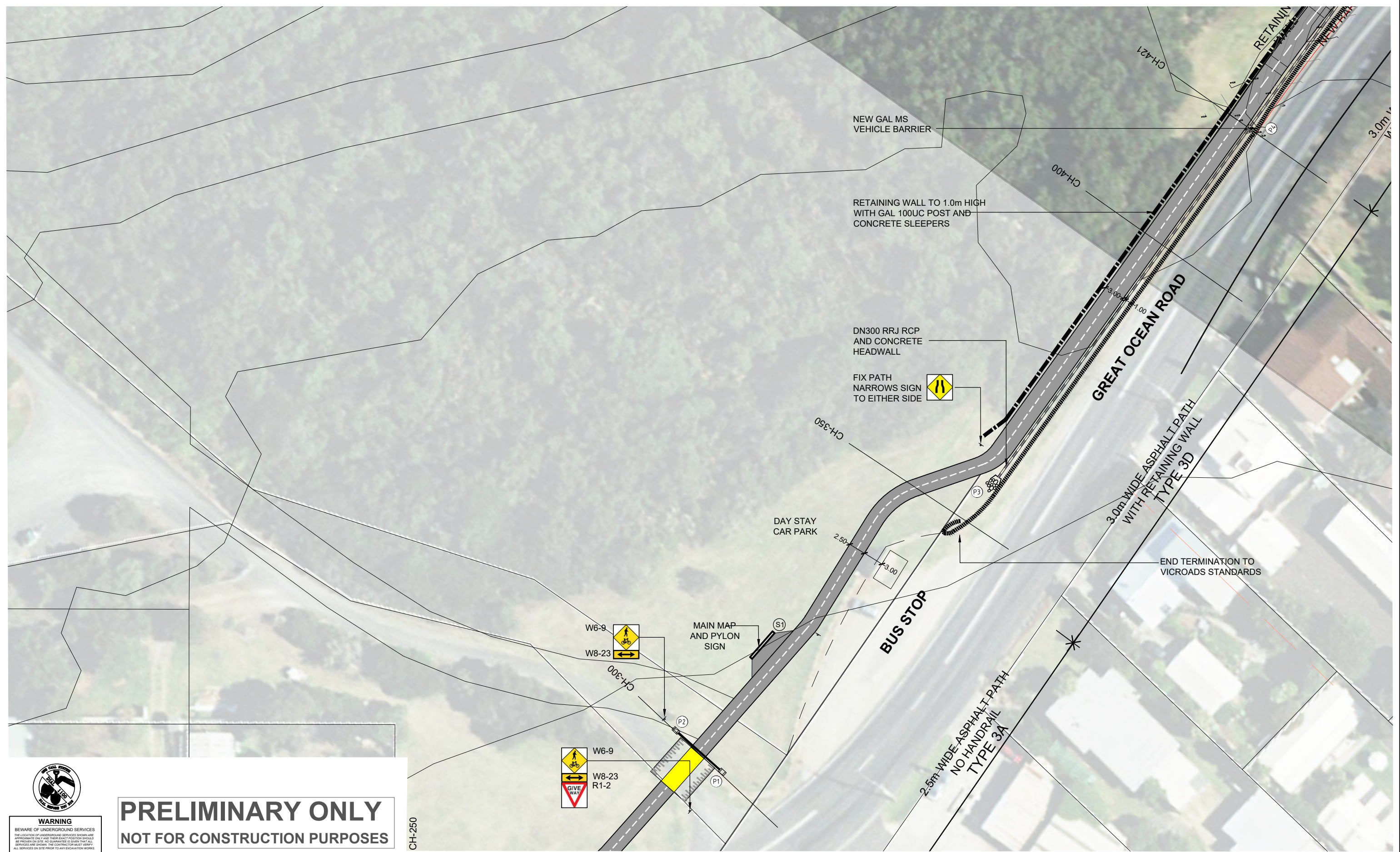
PROJECT TITLE  
**TWELVE APOSTLES TRAIL - TIMBOON TO PORT CAMPBELL DETAILED DESIGN**

DRAWING NAME  
**OPTION 1 PATH AND CROSSING LORD ST - DESAILY STREET PORT CAMPBELL CH-166 TO CH-300**

THOMPSON BERRILL LANDSCAPE DESIGN P/L in association with O'BRIEN TRAFFIC P/L AND STRUCTPLAN P/L

SCALE BAR  
 0 2.5 5 7.5 12.5m

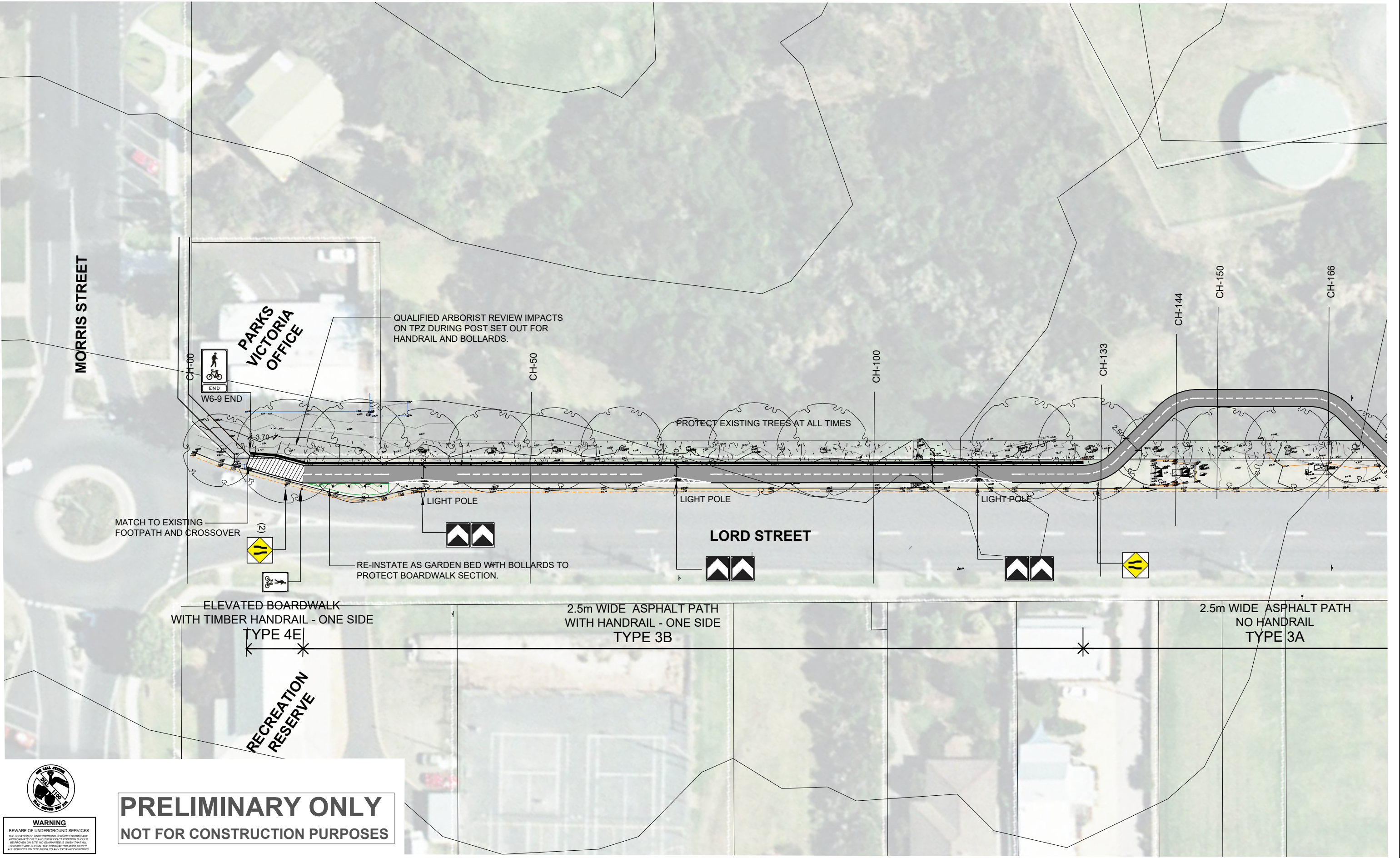
SCALE 1:500 @ A3  
 DATE MAY 2020  
 DRAWN KN  
 DESIGN TBLD  
 CHECKED MB  
 DATUM MGA-54  
 DWG No. 12AT-02BB  
 ACAD REF: SHEET 02



**PRELIMINARY ONLY**  
**NOT FOR CONSTRUCTION PURPOSES**

CH-250

<p><b>DRAWING KEY</b></p> <p><b>UNSEALED PATH TYPES (REFER DWG 12AT - P1 - P2)</b></p> <ul style="list-style-type: none"> <li>TYPE 1A 2.5m WIDE UNSEALED PATH - NO EDGING</li> <li>TYPE 1B 2.5m WIDE UNSEALED PATH - WITH GEOFABRIC</li> <li>TYPE 1C WIDEN - TOP DRESS EXISTING PATH/ DRIVEWAY TO 2.5m</li> </ul> <p><b>DRAINAGE (REFER DWG 12AT - D1)</b></p> <ul style="list-style-type: none"> <li>900 x 600 GRATED CATCH PIT (IDM.....)</li> <li>DN300 CLASS 3 RRJ RCP (IDM.....)</li> <li>CONCRETE HEADWALL (IDM.....)</li> <li>DRIVEABLE CONCRETE HEADWALL (IDM.....)</li> <li>TABLE DRAIN (MIN 1.0m WIDE MIN 150 DEEP)</li> </ul>	<p><b>ASPHALT PATH TYPES (REFER DWG 12AT - A1 - A3)</b></p> <ul style="list-style-type: none"> <li>TYPE 3A 2.5m WIDE ASPHALT PATH - NO HANDRAIL</li> <li>TYPE 3B 3.0m WIDE ASPHALT PATH - TIMBER HANDRAIL TO ONE SIDE</li> <li>TYPE 3C 3.0m WIDE ASPHALT PATH - WITH RETAINING EDGE AND HAND RAIL TO ONE SIDE</li> <li>TYPE 3D 3.0m WIDE ASPHALT PATH - WITH GAL MS RETAINING WALL NO HANDRAIL</li> </ul> <p><b>FENCING TYPES (REFER DWG 12AT - F1)</b></p> <ul style="list-style-type: none"> <li>TYPE A POST AND WIRE</li> <li>TYPE B POST AND RAIL (FRANGIBLE WITH REFLECTORS)</li> <li>TYPE C VEHICLE BARRIER - INCLUDING TERMINATIONS</li> <li>TYPE D WHITE ROADSIDE BOLLARD (FRANGIBLE WITH REFLECTORS)</li> <li>TYPE E HIGH VIS YELLOW BOLLARD</li> </ul>	<p><b>ELEVATED BOARDWALK TYPES (REFER DWG 12AT - B1 - B3)</b></p> <ul style="list-style-type: none"> <li>TYPE 4A STEEL SUBFLOOR AND HANDRAIL - ONE SIDE (3.0m SPAN)</li> <li>TYPE 4B STEEL SUBFLOOR AND HANDRAIL - BOTH SIDES (UP TO 11.0m SPAN)</li> <li>TYPE 4C STEEL SUBFLOOR AND HANDRAIL - ONE SIDE (3.0m SPAN)</li> <li>TYPE 4D CANTILEVERED STEEL FLOOR WITH TIMBER LOOKOUT RAIL - ONE SIDE</li> <li>TYPE 4E TIMBER BOARDWALK WITH HANDRAIL TO ONE SIDE</li> </ul> <p><b>SIGNAGE</b></p> <ul style="list-style-type: none"> <li>EXISTING SIGN</li> <li>DIRECTIONAL SIGN BOARD</li> <li>MAIN SIGN WITH MAP</li> <li>NEW REGULATORY SIGN</li> </ul>	<table border="1"> <thead> <tr> <th>DATE</th> <th>REV</th> <th>AMENDMENT</th> </tr> </thead> <tbody> <tr> <td>21.05.20</td> <td>B</td> <td>DRAFT - SITE COMMENTS 18.5.20</td> </tr> <tr> <td>11.05.20</td> <td>A</td> <td>DRAFT FUNCTIONAL DESIGN</td> </tr> </tbody> </table>	DATE	REV	AMENDMENT	21.05.20	B	DRAFT - SITE COMMENTS 18.5.20	11.05.20	A	DRAFT FUNCTIONAL DESIGN	<p>CLIENT</p> <p><b>CORANGAMITE SHIRE</b></p>	<p>PROJECT TITLE</p> <p><b>TWELVE APOSTLES TRAIL - TIMBOON TO PORT CAMPBELL DETAILED DESIGN</b></p> <p>DRAWING NAME</p> <p><b>LORD ST - GREAT OCEAN RD PORT CAMPBELL CH-300 TO CH-421</b></p>	<p>SCALE BAR</p> <p>0 2.5 5 7.5 12.5m</p> <p>SCALE 1:500 @ A3</p> <p>DATE MAY 2020</p> <p>DRAWN KN</p> <p>DESIGN TBLD</p> <p>CHECKED MB</p> <p>DATUM MGA-54</p> <p>DWG No. <b>12AT-02C</b></p> <p>ACAD REF: SHEET 02</p>
DATE	REV	AMENDMENT													
21.05.20	B	DRAFT - SITE COMMENTS 18.5.20													
11.05.20	A	DRAFT FUNCTIONAL DESIGN													



MORRIS STREET

PARKS VICTORIA OFFICE

QUALIFIED ARBORIST REVIEW IMPACTS ON TPZ DURING POST SET OUT FOR HANDRAIL AND BOLLARDS.

PROTECT EXISTING TREES AT ALL TIMES

LORD STREET

ELEVATED BOARDWALK WITH TIMBER HANDRAIL - ONE SIDE TYPE 4E

2.5m WIDE ASPHALT PATH WITH HANDRAIL - ONE SIDE TYPE 3B

2.5m WIDE ASPHALT PATH NO HANDRAIL TYPE 3A

RECREATION RESERVE

**PRELIMINARY ONLY**  
**NOT FOR CONSTRUCTION PURPOSES**

**WARNING**  
BEWARE OF UNDERGROUND SERVICES  
THE LOCATION OF UNDERGROUND SERVICES SHOWN ARE APPROXIMATE ONLY AND THEIR EXACT POSITION SHOULD BE CHECKED ON SITE. NO GUARANTEE IS GIVEN THAT ALL SERVICES ARE SHOWN. THE CONTRACTOR MUST VERIFY ALL SERVICES ON SITE PRIOR TO ANY EXCAVATION WORK.

**DRAWING KEY**

**UNSEALED PATH TYPES (REFER DWG 12AT- P1 - P2)**

- TYPE 1A 2.5m WIDE UNSEALED PATH - NO EDGING
- TYPE 1B 2.5m WIDE UNSEALED PATH - WITH GEOTEXTILE
- TYPE 1C WIDEN - TOP DRESS EXISTING PATH/ DRIVEWAY TO 2.5m

**DRAINAGE (REFER DWG 12AT- D1)**

- 900 x 600 GRATED CATCH PIT (IDM...)
- DN300 CLASS 3 RRJ RCP (IDM...)
- CONCRETE HEADWALL (IDM...)
- DRIVEABLE CONCRETE HEADWALL (IDM...)
- TABLE DRAIN (MIN 1.0m WIDE MIN 150 DEEP)

**ASPHALT PATH TYPES (REFER DWG 12AT - A1 - A3)**

- TYPE 3A 2.5m WIDE ASPHALT PATH - NO HANDRAIL
- TYPE 3B 3.0m WIDE ASPHALT PATH - TIMBER HANDRAIL TO ONE SIDE
- TYPE 3C 3.0m WIDE ASPHALT PATH - WITH RETAINING EDGE AND HAND RAIL TO ONE SIDE
- TYPE 3D 3.0m WIDE ASPHALT PATH - WITH GAL MS RETAINING WALL NO HANDRAIL

**FENCING TYPES (REFER DWG 12AT - F1)**

- TYPE A POST AND WIRE
- TYPE B POST AND RAIL (FRANGIBLE WITH REFLECTORS)
- TYPE C VEHICLE BARRIER - INCLUDING TERMINATIONS
- TYPE D WHITE ROADSIDE BOLLARD (FRANGIBLE WITH REFLECTORS)
- TYPE E HIGH VIS YELLOW BOLLARD

**ELEVATED BOARDWALK TYPES (REFER DWG 12AT - B1 - B3)**

- TYPE 4A STEEL SUBFLOOR AND HANDRAIL - ONE SIDE (3.0m SPAN)
- TYPE 4B STEEL SUBFLOOR AND HANDRAIL - BOTH SIDES (UP TO 11.0m SPAN)
- TYPE 4C STEEL SUBFLOOR AND HANDRAIL - ONE SIDE (3.0m SPAN)
- TYPE 4D CANTILEVERED STEEL FLOOR WITH TIMBER LOOKOUT RAIL - ONE SIDE
- TYPE 4E TIMBER BOARDWALK WITH HANDRAIL TO ONE SIDE

**SIGNAGE**

- EXISTING SIGN
- DIRECTIONAL SIGN BOARD
- MAIN SIGN WITH MAP
- NEW REGULATORY SIGN

DATE	REV	AMENDMENT
21.05.20	B	DRAFT - SITE COMMENTS 18.5.20
11.05.20	A	DRAFT FUNCTIONAL DESIGN

CLIENT

**CORANGAMITE SHIRE**

PROJECT TITLE  
**TWELVE APOSTLES TRAIL - TIMBOON TO PORT CAMPBELL DETAILED DESIGN**

DRAWING NAME  
**OPTION 2 MORRIS ST - LORD ST PORT CAMPBELL CH-00 TO CH-166**

THOMPSON BERRILL LANDSCAPE DESIGN P/L in association with O'BRIEN TRAFFIC P/L AND STRUCTPLAN P/L

SCALE BAR  
0 2.5 5 7.5 12.5m

SCALE 1:500 @ A3

DATE MAY 2020

DRAWN KN

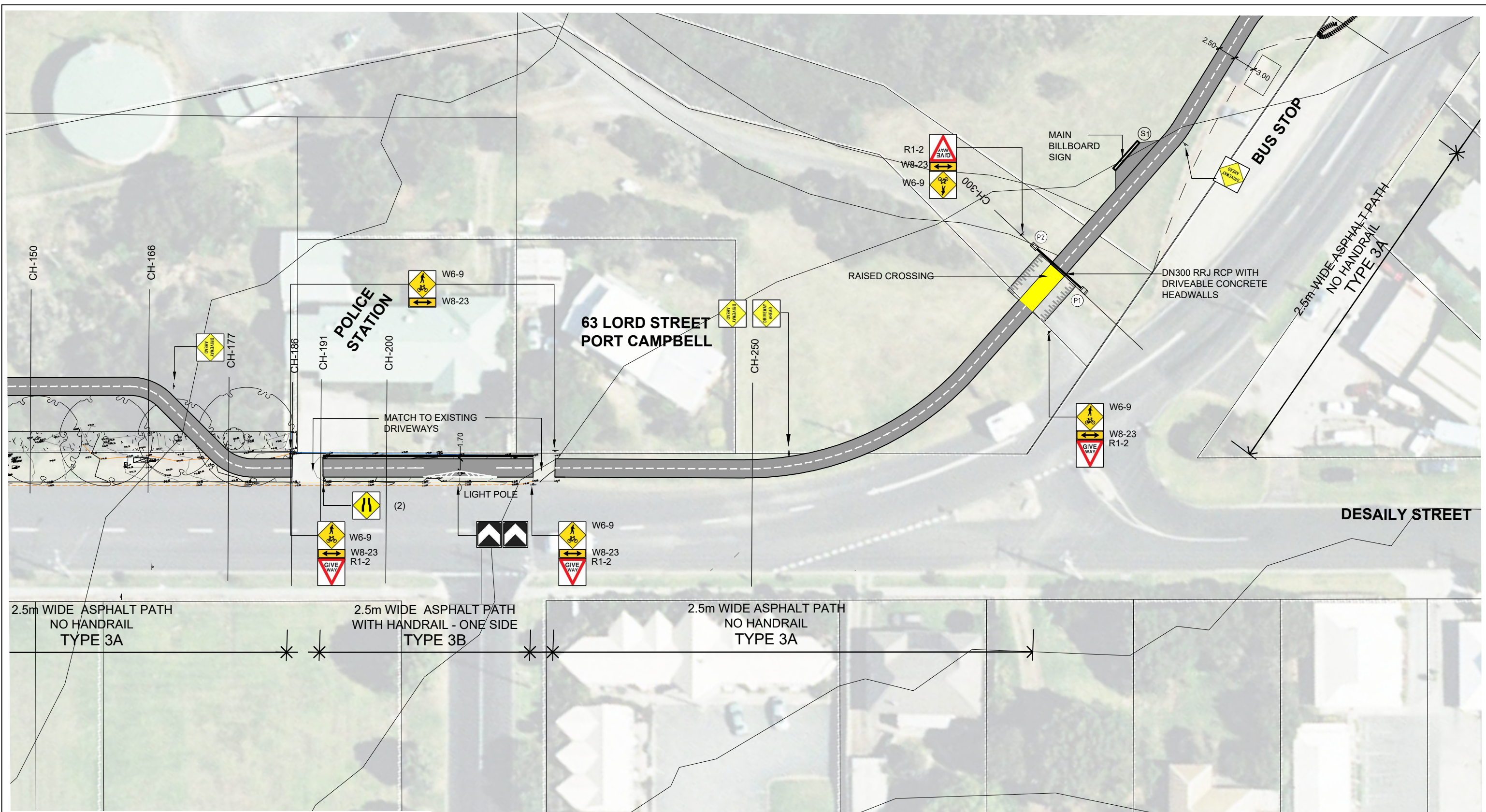
DESIGN TBLD

CHECKED MB

DATUM MGA-54

DWG No. 12AT-02A

ACAD REF: SHEET 02



**PRELIMINARY ONLY**  
**NOT FOR CONSTRUCTION PURPOSES**

**WARNING**  
 BEWARE OF UNDERGROUND SERVICES  
 THE LOCATION OF UNDERGROUND SERVICES SHOWN ARE APPROXIMATE ONLY AND THEIR EXACT POSITION SHOULD BE CHECKED ON SITE. NO GUARANTEE IS GIVEN THAT ALL SERVICES ARE SHOWN. THE CONTRACTOR MUST VERIFY ALL SERVICES ON SITE PRIOR TO ANY EXCAVATION WORK.

DATE	REV	AMENDMENT	CLIENT	PROJECT TITLE	SCALE BAR
21.05.20	B	DRAFT - SITE COMMENTS 18.5.20	 CORANGAMITE SHIRE	TWELVE APOSTLES TRAIL - TIMBOON TO PORT CAMPBELL DETAILED DESIGN DRAWING NAME OPTION 2 LORD ST - GREAT OCEAN RD PORT CAMPBELL CH-166 TO CH-300	0 2.5 5 7.5 12.5m SCALE 1:500 @ A3 DATE MAY 2020 DRAWN KN DESIGN TBLD CHECKED MB DATUM MGA-54 DWG No. 12AT-02B ACAD REF: SHEET 02
11.05.20	A	DRAFT FUNCTIONAL DESIGN			 THOMPSON BERRILL LANDSCAPE DESIGN P/L in association with O'BRIEN TRAFFIC P/L AND STRUCTPLAN P/L

**DRAWING KEY**

**UNSEALED PATH TYPES (REFER DWG 12AT - P1 - P2)**

- TYPE 1A 2.5m WIDE UNSEALED PATH - NO EDGING
- TYPE 1B 2.5m WIDE UNSEALED PATH - WITH GEOFABRIC
- TYPE 1C WIDEN - TOP DRESS EXISTING PATH/ DRIVEWAY TO 2.5m

**DRAINAGE (REFER DWG 12AT - D1)**

- 900 x 600 GRATED CATCH PIT (IDM.....)
- DN300 CLASS 3 RRJ RCP (IDM.....)
- CONCRETE HEADWALL (IDM.....)
- DRIVEABLE CONCRETE HEADWALL (IDM.....)
- TABLE DRAIN (MIN 1.0m WIDE MIN 150 DEEP)

**ASPHALT PATH TYPES (REFER DWG 12AT - A1 - A3)**

- TYPE 3A 2.5m WIDE ASPHALT PATH - NO HANDRAIL
- TYPE 3B 3.0m WIDE ASPHALT PATH - TIMBER HANDRAIL TO ONE SIDE
- TYPE 3C 3.0m WIDE ASPHALT PATH - WITH RETAINING EDGE AND HAND RAIL TO ONE SIDE
- TYPE 3D 3.0m WIDE ASPHALT PATH - WITH GAL MS RETAINING WALL NO HANDRAIL

**FENCING TYPES (REFER DWG 12AT - F1)**

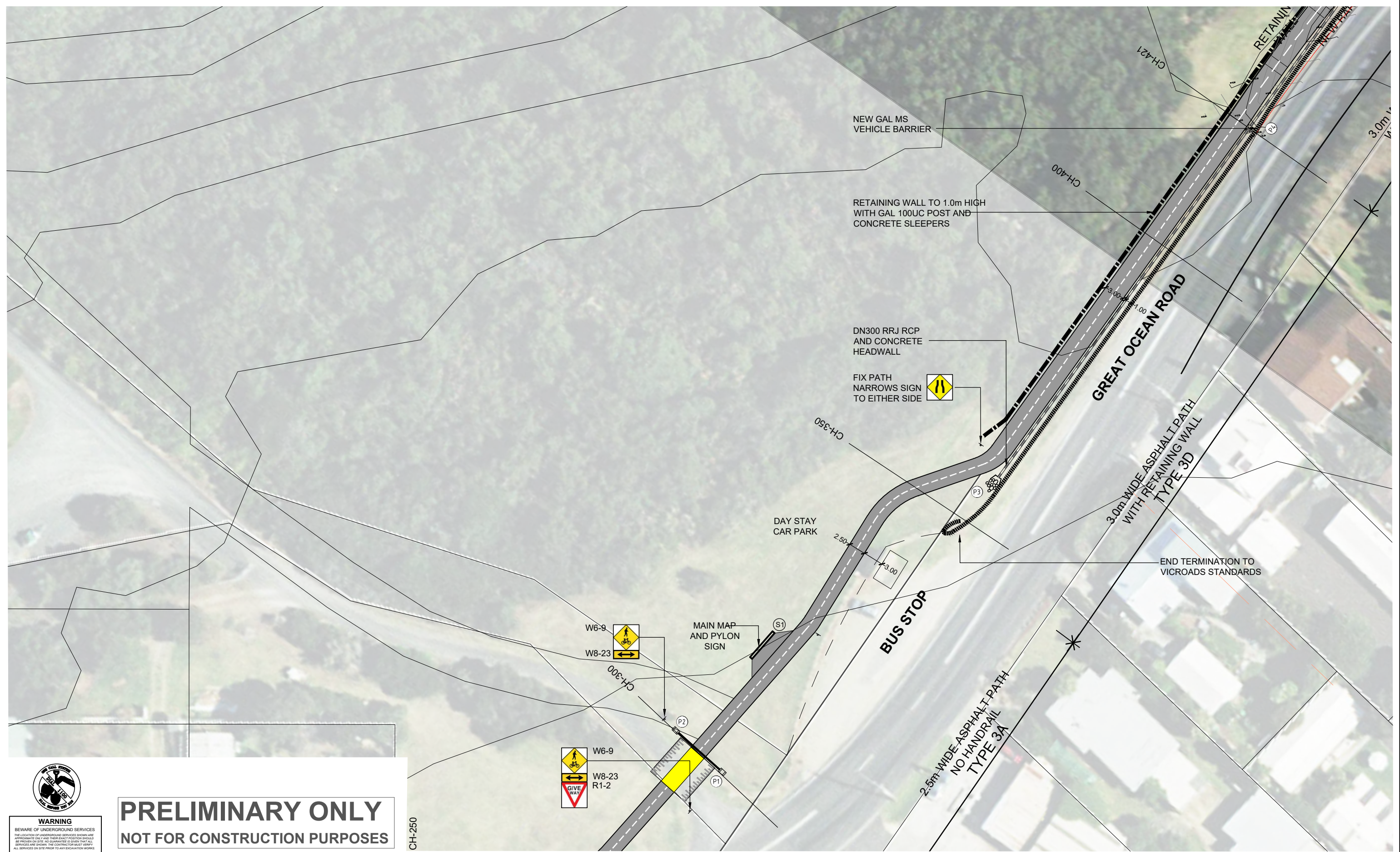
- TYPE A POST AND WIRE
- TYPE B POST AND RAIL (FRANGIBLE WITH REFLECTORS)
- TYPE C VEHICLE BARRIER - INCLUDING TERMINATIONS
- TYPE D WHITE ROADSIDE BOLLARD (FRANGIBLE WITH REFLECTORS)
- TYPE E HIGH VIS YELLOW BOLLARD

**ELEVATED BOARDWALK TYPES (REFER DWG 12AT - B1 - B3)**

- TYPE 4A STEEL SUBFLOOR AND HANDRAIL - ONE SIDE (3.0m SPAN)
- TYPE 4B STEEL SUBFLOOR AND HANDRAIL - BOTH SIDES (UP TO 11.0m SPAN)
- TYPE 4C STEEL SUBFLOOR AND HANDRAIL - ONE SIDE (3.0m SPAN)
- TYPE 4D CANTILEVERED STEEL FLOOR WITH TIMBER LOOKOUT RAIL - ONE SIDE
- TYPE 4E TIMBER BOARDWALK WITH HANDRAIL TO ONE SIDE

**SIGNAGE**

- EXISTING SIGN
- DIRECTIONAL SIGN BOARD
- MAIN SIGN WITH MAP
- NEW REGULATORY SIGN



**PRELIMINARY ONLY**  
**NOT FOR CONSTRUCTION PURPOSES**

CH-250

**DRAWING KEY**

**UNSEALED PATH TYPES (REFER DWG 12AT - P1 - P2)**

- TYPE 1A 2.5m WIDE UNSEALED PATH - NO EDGING
- TYPE 1B 2.5m WIDE UNSEALED PATH - WITH GEOFABRIC
- TYPE 1C WIDEN - TOP DRESS EXISTING PATH/ DRIVEWAY TO 2.5m

**DRAINAGE (REFER DWG 12AT - D1)**

- 900 x 600 GRATED CATCH PIT (IDM.....)
- DN300 CLASS 3 RRJ RCP (IDM.....)
- CONCRETE HEADWALL (IDM.....)
- DRIVEABLE CONCRETE HEADWALL (IDM.....)
- TABLE DRAIN (MIN 1.0m WIDE MIN 150 DEEP)

**ASPHALT PATH TYPES (REFER DWG 12AT - A1 - A3)**

- TYPE 3A 2.5m WIDE ASPHALT PATH - NO HANDRAIL
- TYPE 3B 3.0m WIDE ASPHALT PATH - TIMBER HANDRAIL TO ONE SIDE
- TYPE 3C 3.0m WIDE ASPHALT PATH - WITH RETAINING EDGE AND HAND RAIL TO ONE SIDE
- TYPE 3D 3.0m WIDE ASPHALT PATH - WITH GAL MS RETAINING WALL NO HANDRAIL

**FENCING TYPES (REFER DWG 12AT - F1)**

- TYPE A POST AND WIRE
- TYPE B POST AND RAIL (FRANGIBLE WITH REFLECTORS)
- TYPE C VEHICLE BARRIER - INCLUDING TERMINATIONS
- TYPE D WHITE ROADSIDE BOLLARD (FRANGIBLE WITH REFLECTORS)
- TYPE E HIGH VIS YELLOW BOLLARD

**ELEVATED BOARDWALK TYPES (REFER DWG 12AT - B1 - B3)**

- TYPE 4A STEEL SUBFLOOR AND HANDRAIL - ONE SIDE (3.0m SPAN)
- TYPE 4B STEEL SUBFLOOR AND HANDRAIL - BOTH SIDES (UP TO 11.0m SPAN)
- TYPE 4C STEEL SUBFLOOR AND HANDRAIL - ONE SIDE (3.0m SPAN)
- TYPE 4D CANTILEVERED STEEL FLOOR WITH TIMBER LOOKOUT RAIL - ONE SIDE
- TYPE 4E TIMBER BOARDWALK WITH HANDRAIL TO ONE SIDE

**SIGNAGE**

- EXISTING SIGN
- DIRECTIONAL SIGN BOARD
- MAIN SIGN WITH MAP
- NEW REGULATORY SIGN

DATE	REV	AMENDMENT
21.05.20	B	DRAFT - SITE COMMENTS 18.5.20
11.05.20	A	DRAFT FUNCTIONAL DESIGN

CLIENT

**CORANGAMITE SHIRE**

PROJECT TITLE  
**TWELVE APOSTLES TRAIL - TIMBOON TO PORT CAMPBELL DETAILED DESIGN**

DRAWING NAME  
**LORD ST - GREAT OCEAN RD  
 PORT CAMPBELL  
 CH-300 TO CH-421**

THOMPSON BERRILL LANDSCAPE DESIGN P/L in association with O'BRIEN TRAFFIC P/L AND STRUCTPLAN P/L

SCALE BAR  
 0 2.5 5 7.5 12.5m

SCALE 1:500 @ A3  
 DATE MAY 2020  
 DRAWN KN  
 DESIGN TBLD  
 CHECKED MB  
 DATUM MGA-54  
 DWG No. 12AT-02C  
 ACAD REF: SHEET 02